

Oracle® Banking Enterprise Default Management

Infrastructure Setup Guide

Release 2.10.0.0.0

F29509-01

April 2020

Oracle Banking Enterprise Default Management Infrastructure Setup Guide, Release 2.10.0.0.0

F29509-01

Copyright © 2017, 2020, Oracle and/or its affiliates.

Oracle and Java are registered trademarks of Oracle and/or its affiliates. Other names may be trademarks of their respective owners.

Intel and Intel Inside are trademarks or registered trademarks of Intel Corporation. All SPARC trademarks are used under license and are trademarks or registered trademarks of SPARC International, Inc. AMD, Epyc, and the AMD logo are trademarks or registered trademarks of Advanced Micro Devices. UNIX is a registered trademark of The Open Group.

This software and related documentation are provided under a license agreement containing restrictions on use and disclosure and are protected by intellectual property laws. Except as expressly permitted in your license agreement or allowed by law, you may not use, copy, reproduce, translate, broadcast, modify, license, transmit, distribute, exhibit, perform, publish or display any part, in any form, or by any means. Reverse engineering, disassembly, or decompilation of this software, unless required by law for interoperability, is prohibited.

The information contained herein is subject to change without notice and is not warranted to be error-free. If you find any errors, please report them to us in writing.

If this is software or related documentation that is delivered to the U.S. Government or anyone licensing it on behalf of the U.S. Government, then the following notice is applicable:

U.S. GOVERNMENT END USERS: Oracle programs (including any operating system, integrated software, any programs embedded, installed or activated on delivered hardware, and modifications of such programs) and Oracle computer documentation or other Oracle data delivered to or accessed by U.S. Government end users are "commercial computer software" or "commercial computer software documentation" pursuant to the applicable Federal Acquisition Regulation and agency-specific supplemental regulations. As such, the use, reproduction, duplication, release, display, disclosure, modification, preparation of derivative works, and/or adaptation of i) Oracle programs (including any operating system, integrated software, any programs embedded, installed or activated on delivered hardware, and modifications of such programs), ii) Oracle computer documentation and/or iii) other Oracle data, is subject to the rights and limitations specified in the license contained in the applicable contract. The terms governing the U.S. Government's use of Oracle cloud services are defined by the applicable contract for such services. No other rights are granted to the U.S. Government.

This software or hardware is developed for general use in a variety of information management applications. It is not developed or intended for use in any inherently dangerous applications, including applications that may create a risk of personal injury. If you use this software or hardware in dangerous applications, then you shall be responsible to take all appropriate failsafe, backup, redundancy, and other measures to ensure its safe use. Oracle Corporation and its affiliates disclaim any liability for any damages caused by use of this software or hardware in dangerous applications.

This software or hardware and documentation may provide access to or information about content, products, and services from third parties. Oracle Corporation and its affiliates are not responsible for and expressly disclaim all warranties of any kind with respect to third-party content, products, and services unless otherwise set forth in an applicable agreement between you and Oracle. Oracle Corporation and its affiliates will not be responsible for any loss, costs, or damages incurred due to your access to or use of third-party content, products, or services, except as set forth in an applicable agreement between you and Oracle.

Contents

Preface	6
Audience	6
Documentation Accessibility	6
Organization of the Guide	6
Conventions	6
1 About this Guide	9
2 Introduction	11
3 OBIEE Reports Setup	13
3.1 Install JDK 1.8	13
3.2 Install Fusion Middleware 12c Infrastructure	13
3.3 Install OBIEE	20
3.4 Repository Creation	30
3.5 Configure OBIEE 12c	38
3.6 Copying RPD and Reports	53
3.6.1 Reports Setup	53
3.6.2 Day 0 Setup	54
3.6.3 RPD Deployment	54

List of Figures

Figure 3–1 Unzip fmw_12.2.1.3.0_infrastructure_Disk1_1of1.zip	13
Figure 3–2 Oracle Fusion Middleware - Start Installation	13
Figure 3–3 Oracle Fusion Middleware - Welcome Page	14
Figure 3–4 Skip Auto Updates	15
Figure 3–5 Specify Installation Location	16
Figure 3–6 Select Installation Type	17
Figure 3–7 Prerequisite Checks	18
Figure 3–8 Installation Summary - Click Install	19
Figure 3–9 Installation Complete - Click Finish	20
Figure 3–10 Unzip OBIEE Setup	20
Figure 3–11 OBIEE - Start Installation	21
Figure 3–12 OBIEE - Welcome page	22
Figure 3–13 Skip Auto Updates	23
Figure 3–14 Specify Installation Location	24
Figure 3–15 Select Installation Type	25
Figure 3–16 Prerequisite Checks	26
Figure 3–17 Installation Summary - Click Install	27
Figure 3–18 View Installation Progress	28
Figure 3–19 Accept OBIEE License Terms	29
Figure 3–20 Installation Complete - Click Finish	30
Figure 3–21 Repository Creation Utility - Welcome Page	31
Figure 3–22 Create Repository	32
Figure 3–23 Specify Database Connection Details	33
Figure 3–24 Checking Global Prerequisites	33

Figure 3–25 Select Components	34
Figure 3–26 Checking Component Prerequisites	34
Figure 3–27 Specify Schema Passwords	35
Figure 3–28 Map Tablespaces	36
Figure 3–29 Validating and Creating Tablespaces	36
Figure 3–30 Repository Creation Utility - Summary	37
Figure 3–31 Repository Creation Utility - Completion Summary	38
Figure 3–32 Configure OBIEE - Welcome Page	39
Figure 3–33 Select Components to Include	40
Figure 3–34 Prerequisite Checks	41
Figure 3–35 Define New Domain	42
Figure 3–36 Database Schema Details	43
Figure 3–37 Specify Port Range	44
Figure 3–38 Initial Application	45
Figure 3–39 OBIEE Configuration Progress	46
Figure 3–40 OBIEE Configuration Complete	47
Figure 3–41 OBIEE Login	48
Figure 3–42 OBIEE Dashboards Visualizations	49
Figure 3–43 Start, Stop, Status scripts	50
Figure 3–44 OBI Server, Scheduler, ClusterController executables	51
Figure 3–45 Catalog Manager	51
Figure 3–46 Javahost	52
Figure 3–47 Repository File and Web Catalog	52
Figure 3–48 Log Files	53
Figure 3–49 Update Source Name and User Credentials	55
Figure 3–50 Upload Repository to OBI Server	56

Preface

This document helps you to configure the Oracle Banking Enterprise Collections and Oracle Banking Enterprise Recovery infrastructure setup.

This preface contains the following topics:

- [Audience](#)
- [Documentation Accessibility](#)
- [Organization of the Guide](#)
- [Conventions](#)

Audience

This document is intended for the following:

- Consulting Staff
- Administrators

Documentation Accessibility

For information about Oracle's commitment to accessibility, visit the Oracle Accessibility Program website at <http://www.oracle.com/us/corporate/accessibility/index.html>.

Access to Oracle Support

Oracle customers have access to electronic support through My Oracle Support. For information, visit <http://www.oracle.com/us/corporate/accessibility/support/index.html#info> or visit <http://www.oracle.com/us/corporate/accessibility/support/index.html#trs> if you are hearing impaired.

Organization of the Guide

This document contains:

[Chapter 1 About this Guide](#)

This chapter provides details about applicability of this guide.

[Chapter 2 Introduction](#)

This chapter presents an overview of the infrastructure setup required for Oracle Banking Enterprise Collections and Oracle Banking Enterprise Recovery.

[Chapter 3 OBIEE Reports Setup](#)

This chapter explains the procedure of installing RCU and OBI for OBIEE reports setup.

Conventions

The following text conventions are used in this document:

Convention	Meaning
boldface	Boldface type indicates graphical user interface elements associated with an action, or terms defined in text or the glossary.
<i>italic</i>	Italic type indicates book titles, emphasis, or placeholder variables for which you supply particular values.
monospace	Monospace type indicates commands within a paragraph, URLs, code in examples, text that appears on the screen, or text that you enter.

1 About this Guide

This guide is applicable for the following products:

- Oracle Banking Platform (Oracle Banking Collections and Oracle Banking Recovery)
- Oracle Banking Enterprise Default Management (Oracle Banking Enterprise Collections and Oracle Banking Enterprise Recovery)

References to Oracle Banking Platform or OBP in this guide apply to all the above mentioned products.

2 Introduction

This document explains the configuration required in enterprise services, such as DMS, OIM, APS to enable Oracle Banking Enterprise Collections and Oracle Banking Enterprise Recovery module deployment along with OBP platform. You must perform the configuration outlined in this document once Oracle Banking Enterprise Collections and Oracle Banking Enterprise Recovery module is deployed along with OBP Release 2.10.0.0.0. Oracle Banking Enterprise Collections and Oracle Banking Enterprise Recovery module uses Document Management System (DMS), Oracle Identity Manager (OIM), APS API for document generation and delivery, user profile management, and application security. Various functional components in Oracle Banking Enterprise Collections and Oracle Banking Enterprise Recovery use the enterprise services offered by OBP.

3 OBIEE Reports Setup

This chapter provides the process of setting up OBIEE reports. It involves installing Repository Creation Utility and Oracle Business Intelligence 12c.

3.1 Install JDK 1.8

Install JDK 1.8 version on your machine.

3.2 Install Fusion Middleware 12c Infrastructure

Following are the steps to install Fusion Middleware 12c Infrastructure:

1. From the zipped folder, unzip `fmw_12.2.1.3.0_infrastructure_Disk1_1of1.zip` jar.
2. Execute the jar `fmw_12.2.1.3.0_infrastructure.jar`.

This can be accomplished in Windows from the command prompt by issuing `Java -jar fmw_12.2.1.3.0_infrastructure.jar`.

Figure 3–1 Unzip fmw_12.2.1.3.0_infrastructure_Disk1_1of1.zip

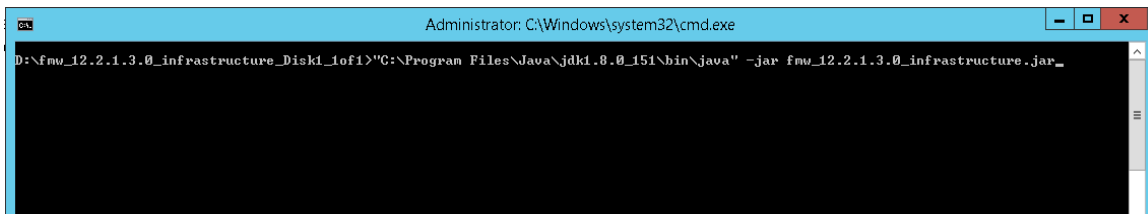
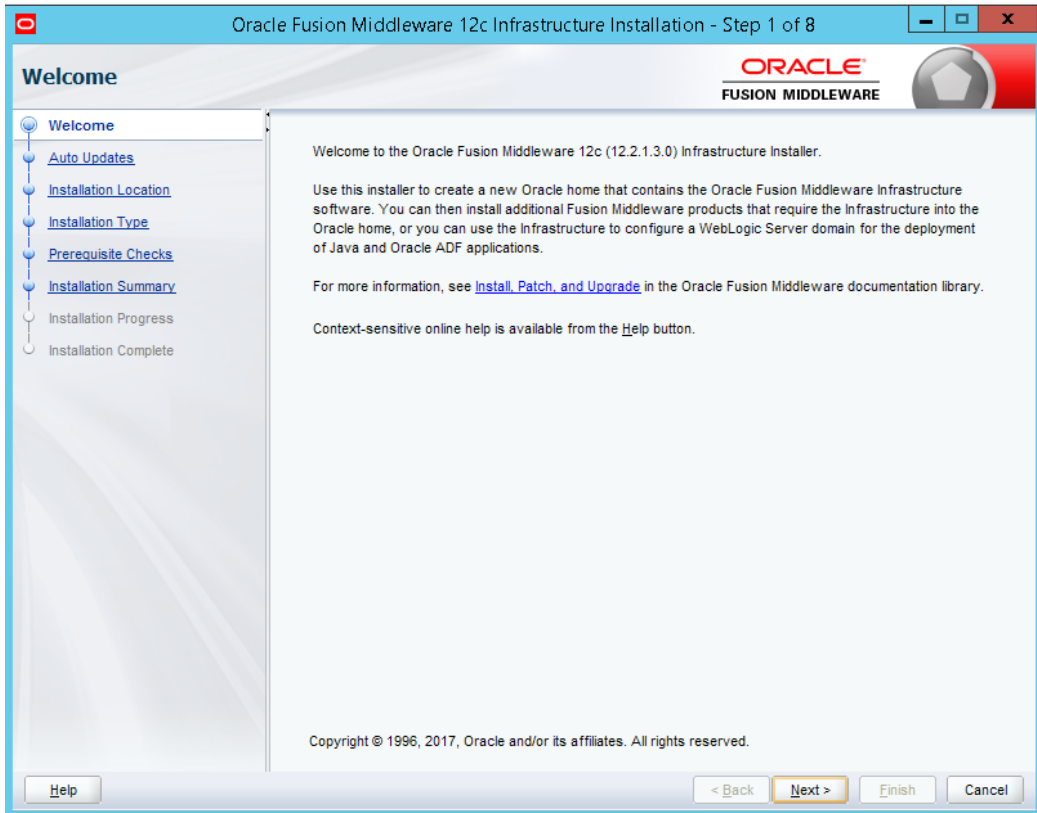


Figure 3–2 Oracle Fusion Middleware - Start Installation



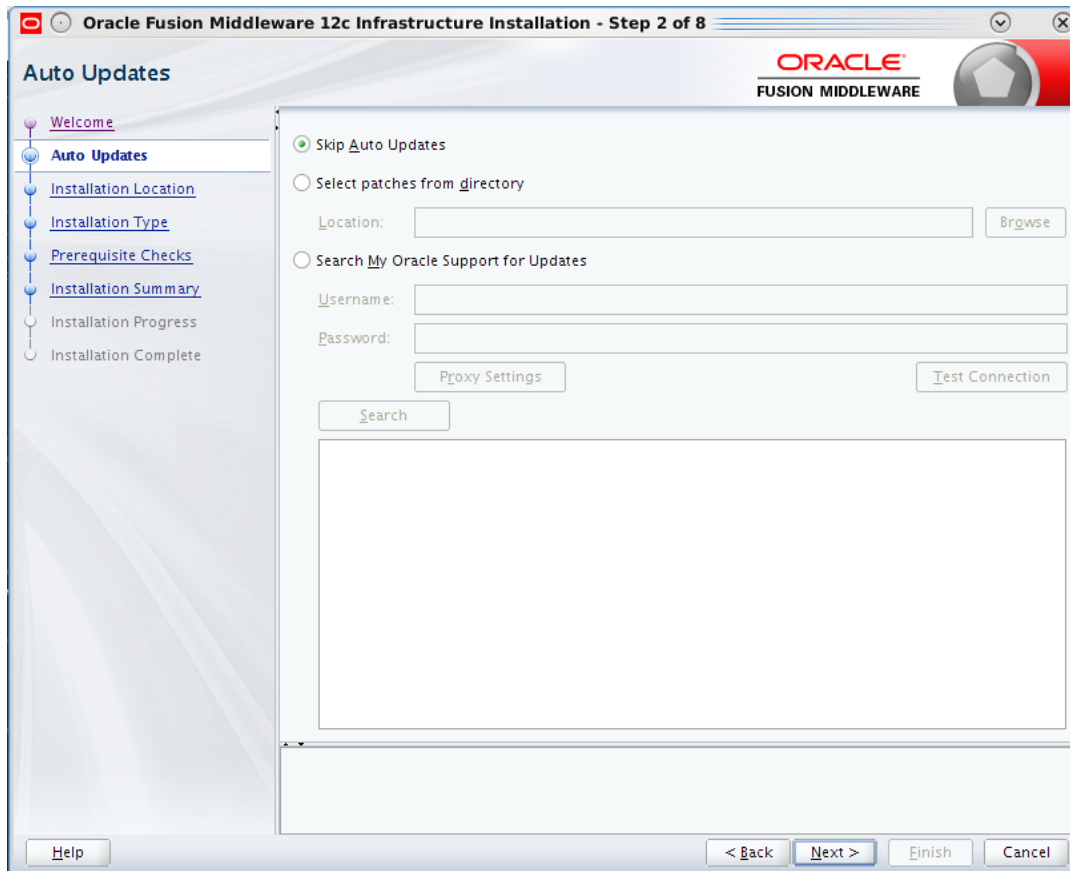
3. In the Welcome page, click **Next**.

Figure 3–3 Oracle Fusion Middleware - Welcome Page



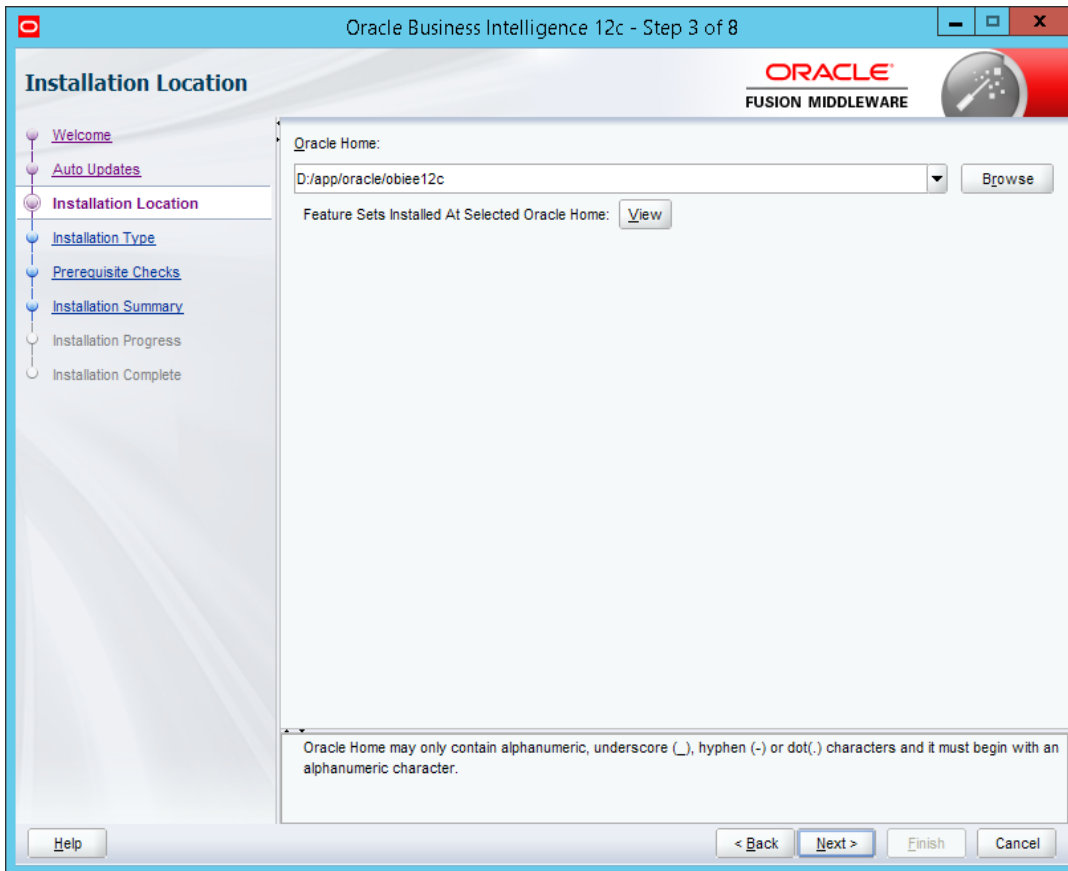
4. In the Auto Updates page, select the **Skip Auto Updates** option.

Figure 3–4 Skip Auto Updates



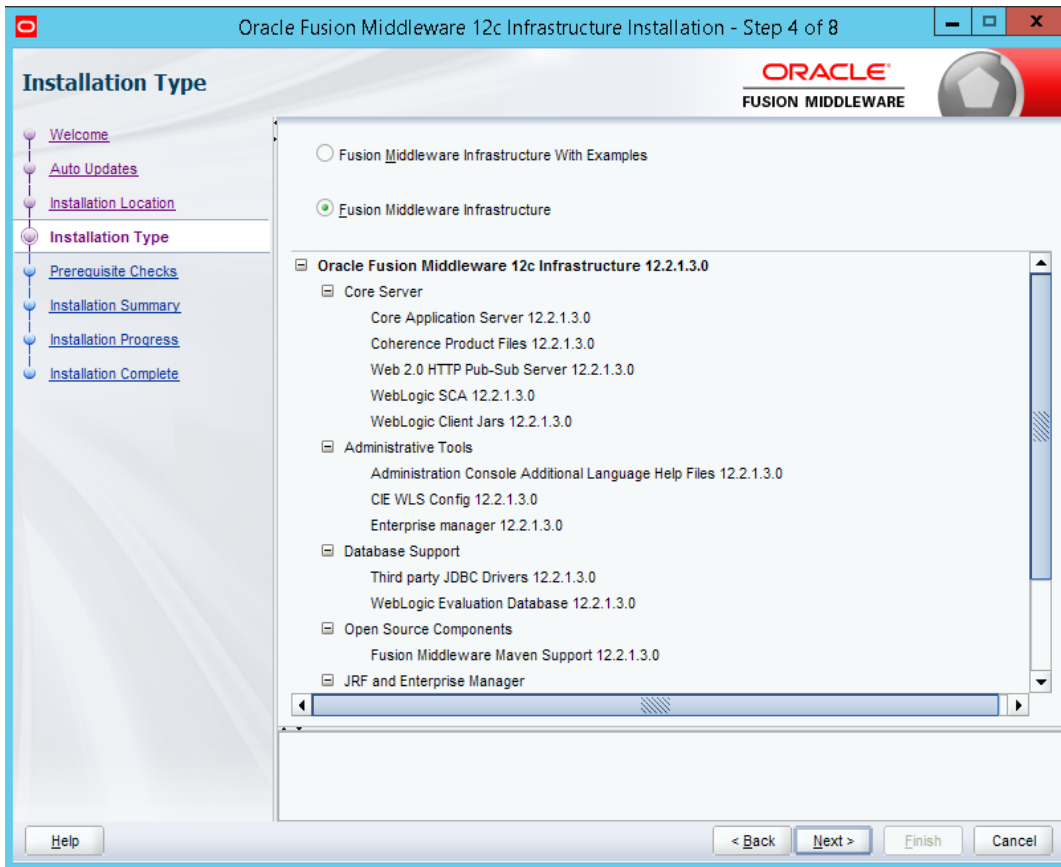
5. Click **Next**.
6. In the Installation Location page, select the Fusion Middleware Home location in the **Oracle Home** field. For example, select **D:/app/oracle/obiee12c**.

Figure 3–5 Specify Installation Location



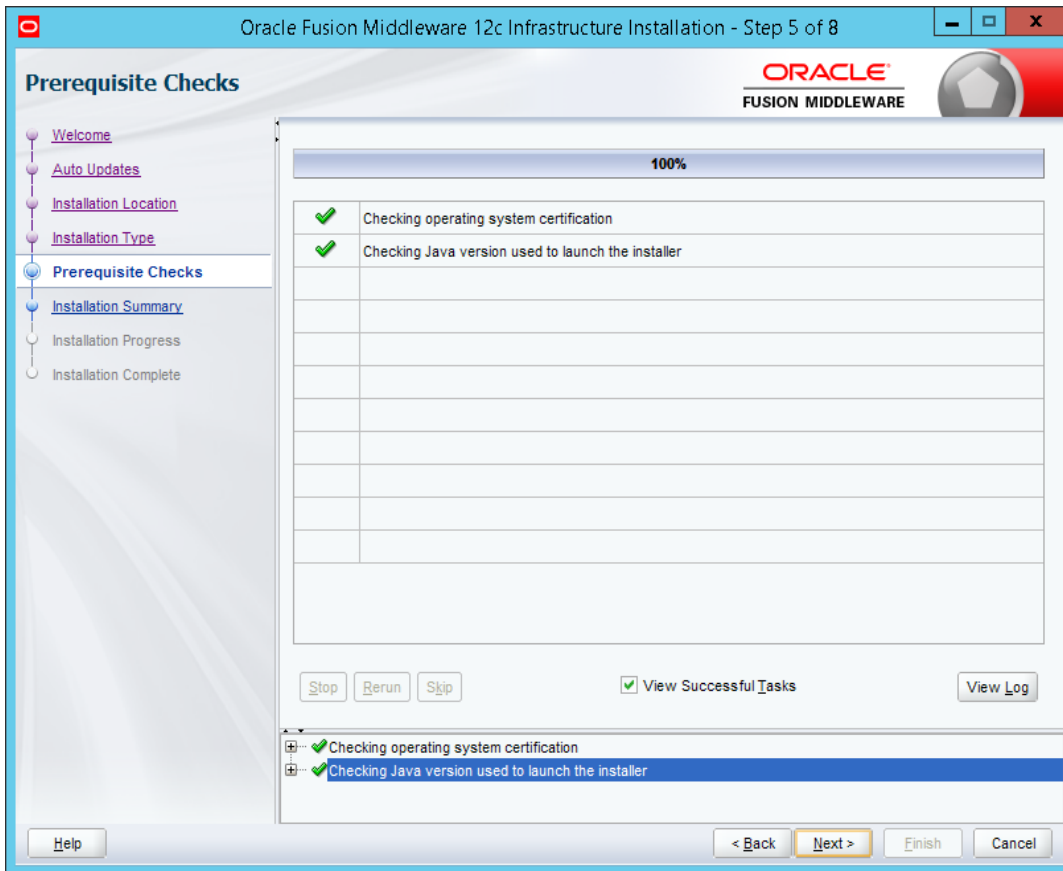
7. In the Installation Type page, select the **Fusion Middleware Infrastructure** option.

Figure 3–6 Select Installation Type



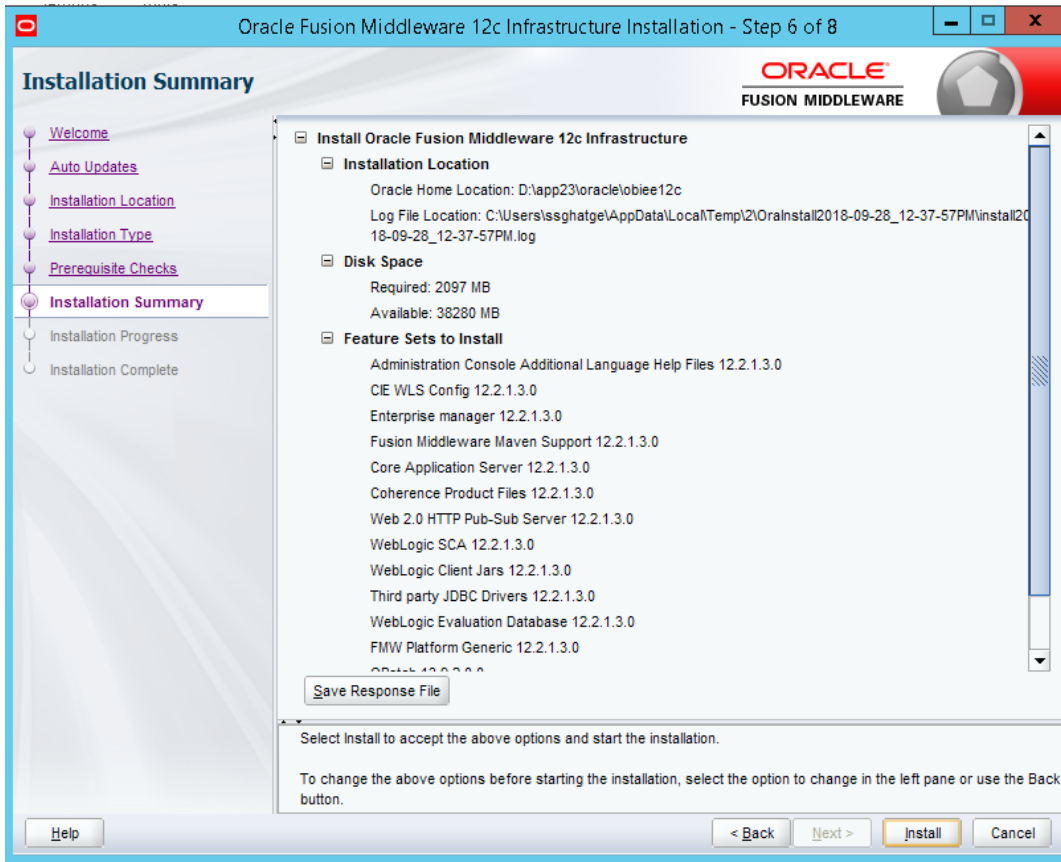
8. Click **Next**.
9. In the Prerequisite Checks page, click **Next** after all system configuration checks are successful.

Figure 3–7 Prerequisite Checks



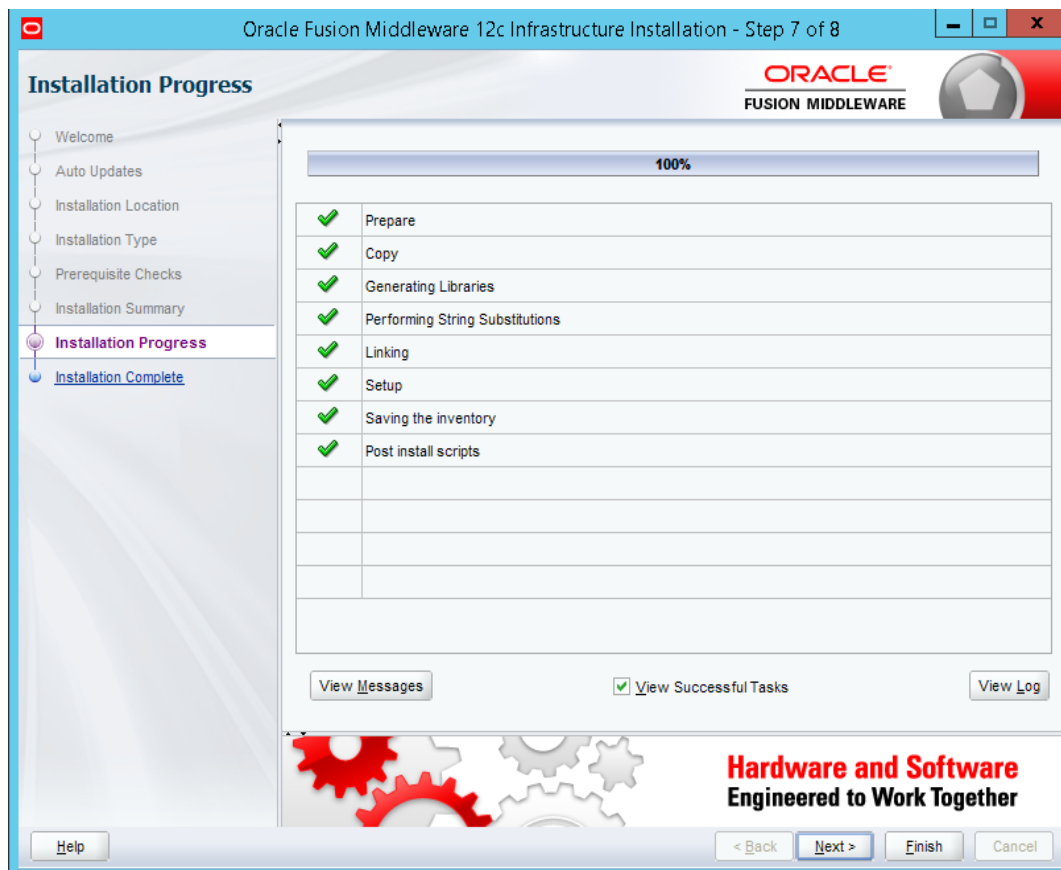
10. In the Installation Summary page, click **Install** to proceed with the installation.

Figure 3–8 Installation Summary - Click Install



11. In the Installation Progress page, click **Finish** to complete the installation.

Figure 3–9 Installation Complete - Click Finish





Oracle Fusion Middleware Infrastructure 12c is now installed.

3.3 Install OBIEE

Following are the steps to install OBIEE 12c:

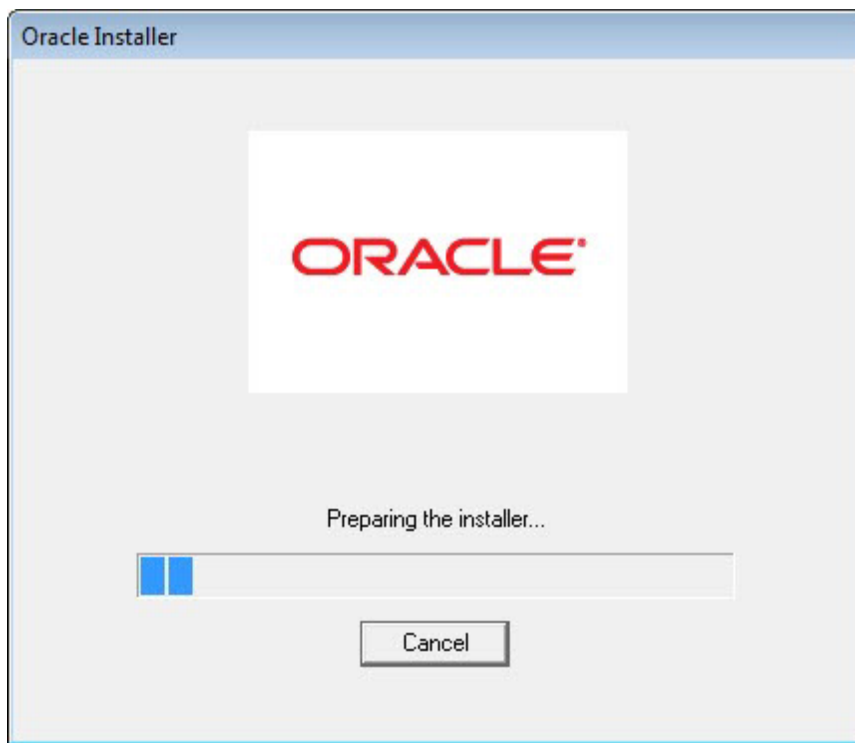
1. From the zipped folder, unzip the two zip files **fmw_12.2.1.3.0_bi_windows64_Disk1_1of2.zip** and **fmw_12.2.1.3.0_bi_windows64_Disk1_2of2.zip**. This creates one executable file and a folder named Disk2.

Figure 3–10 Unzip OBIEE Setup

Name	Date modified	Type	Size
 setup_bi_platform-12.2.1.3.0_win64.exe	8/23/2017 4:09 PM	Application	1,939,056 KB
 setup_bi_platform-12.2.1.3.0_win64-2.zip	8/23/2017 4:06 PM	Compressed (zipp...	1,398,851 KB

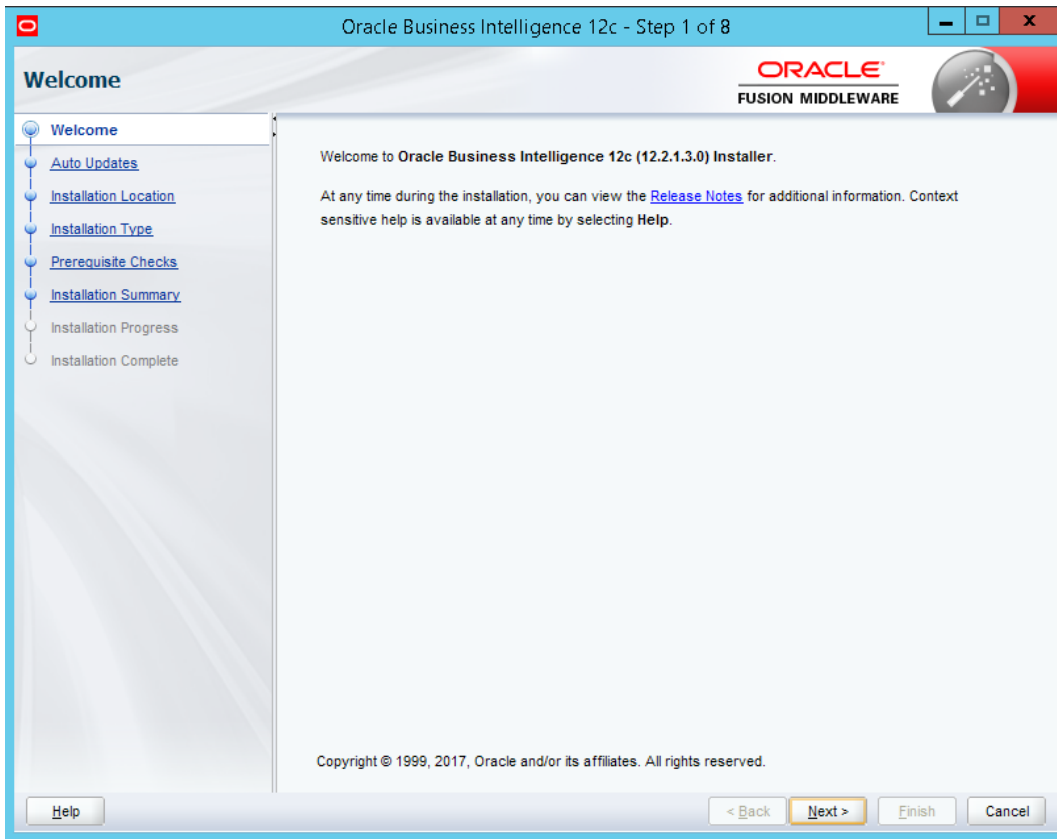
2. Run the setup.exe file. For example, run the setup_bi_platform-12.2.1.3.0_win64.exe. Oracle Installer checks for the initial set up and system requirement.

Figure 3–11 OBIEE - Start Installation



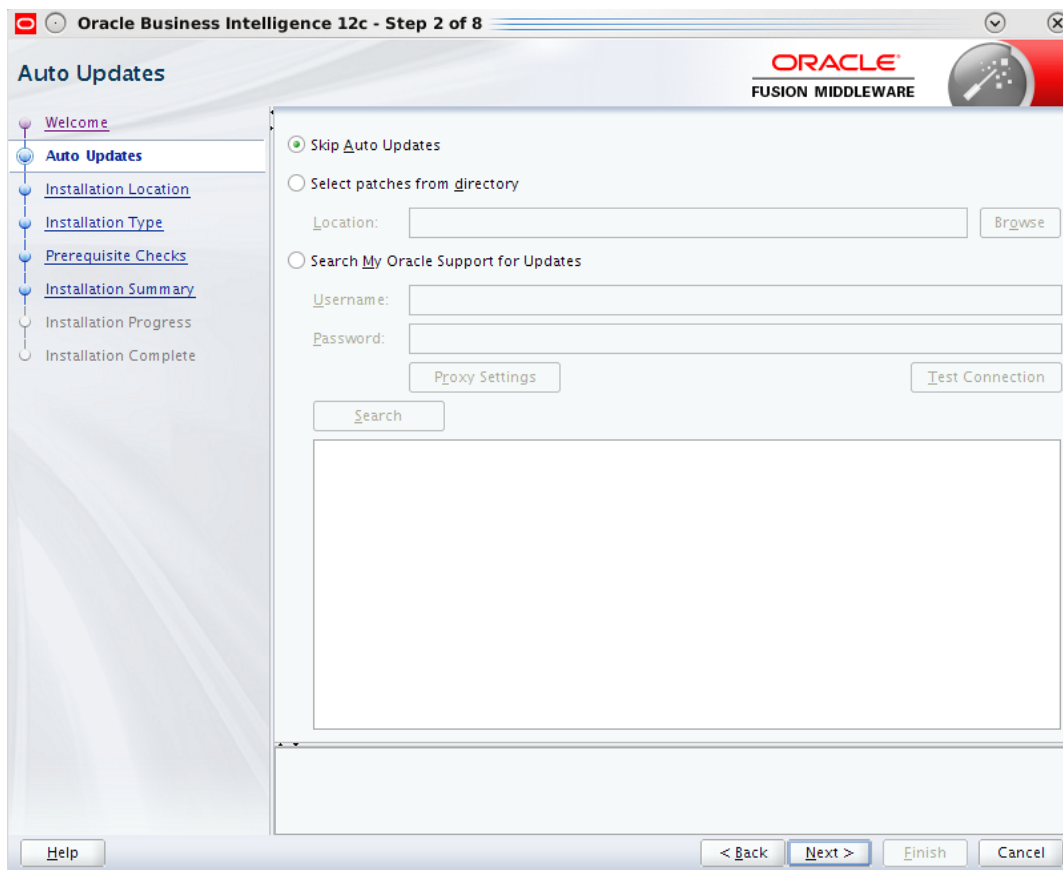
3. In the Welcome page, click **Next**.

Figure 3–12 OBIEE - Welcome page



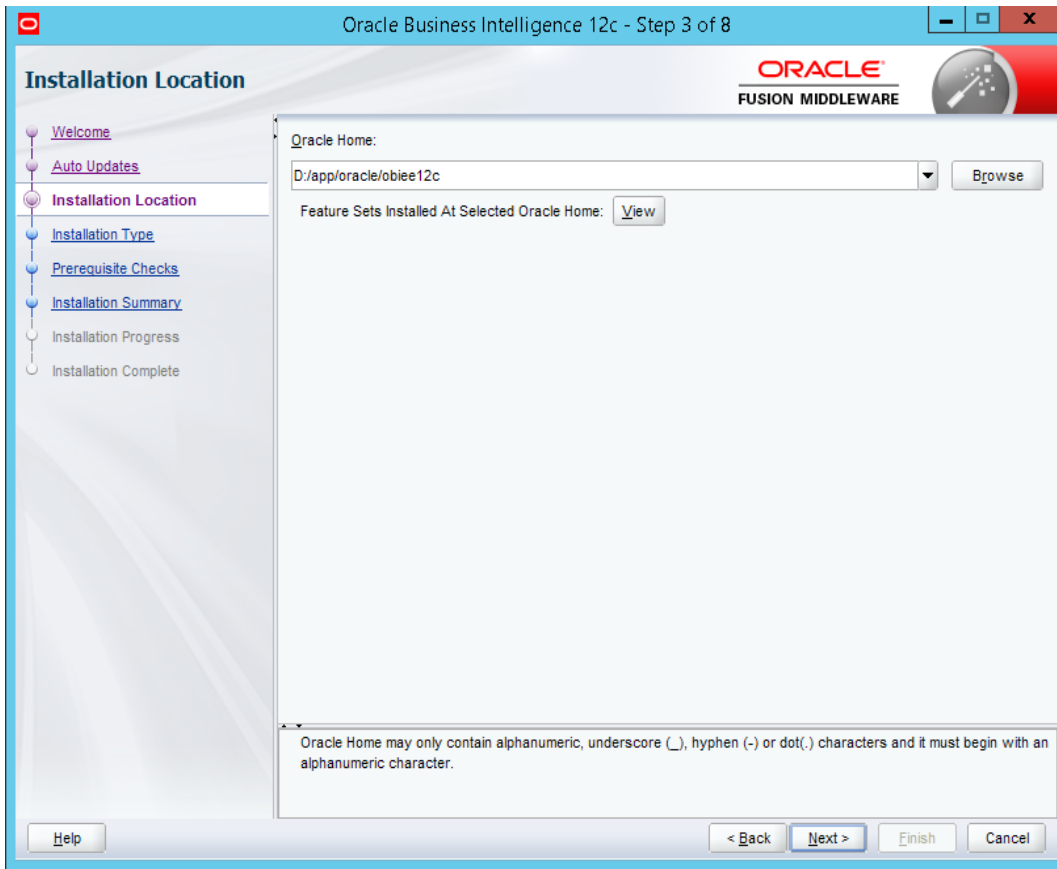
4. In the Auto Updates page, select the **Skip Auto Updates** option.

Figure 3–13 Skip Auto Updates



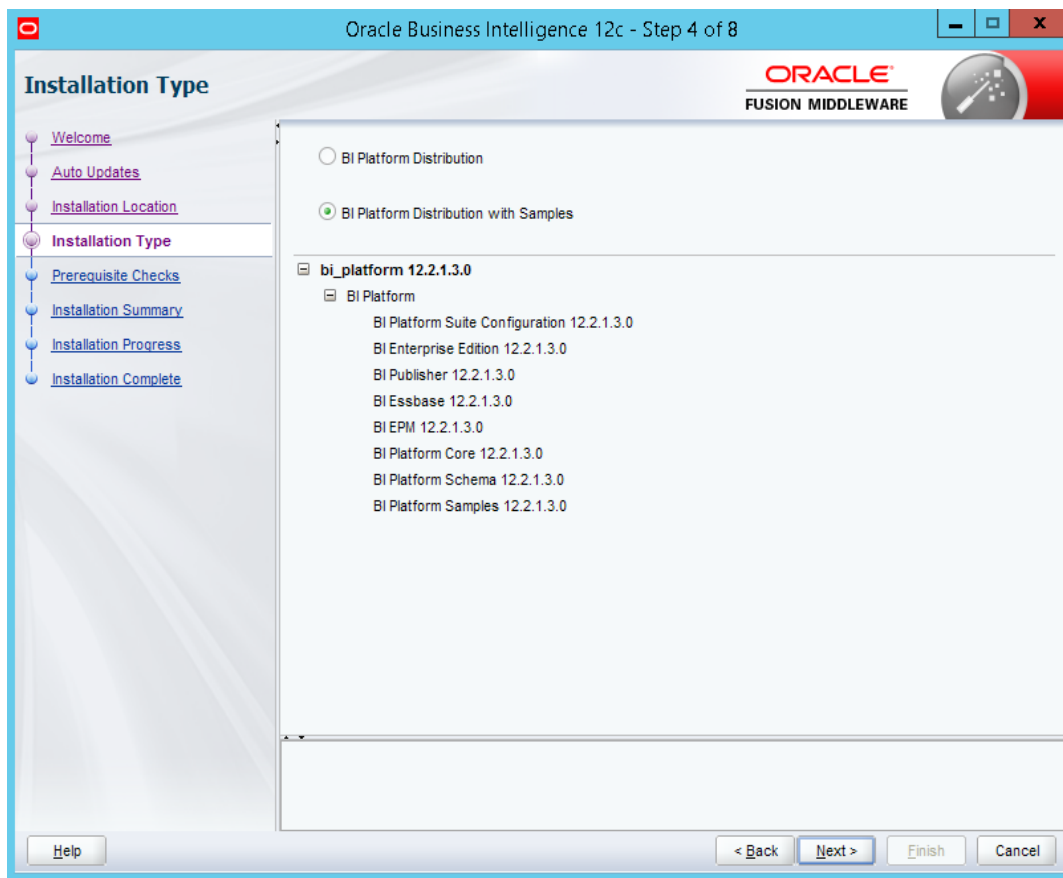
5. Click **Next**.
6. In the Installation Location page, select the Fusion Middleware Home location in the **Oracle Home** field. For example, select **D:/app/oracle/obiee12c**.

Figure 3–14 Specify Installation Location



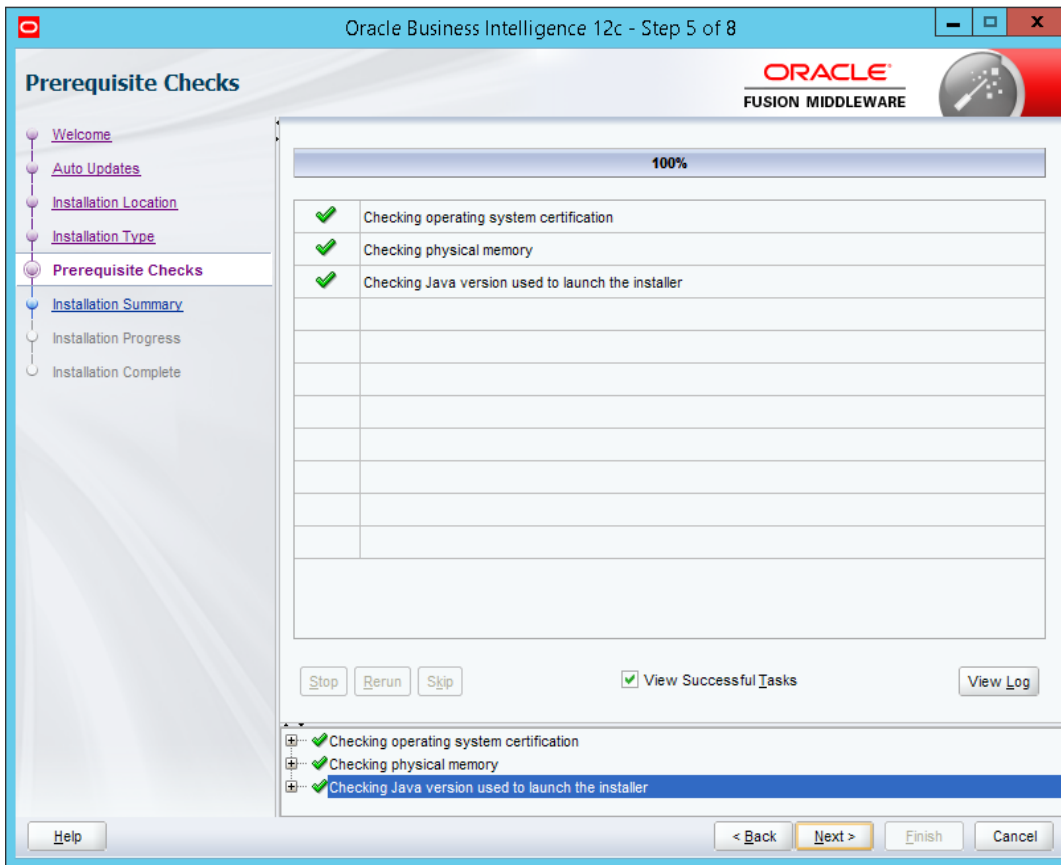
7. In the Installation Type page, select **BI Platform Distribution with Samples** option.

Figure 3–15 Select Installation Type



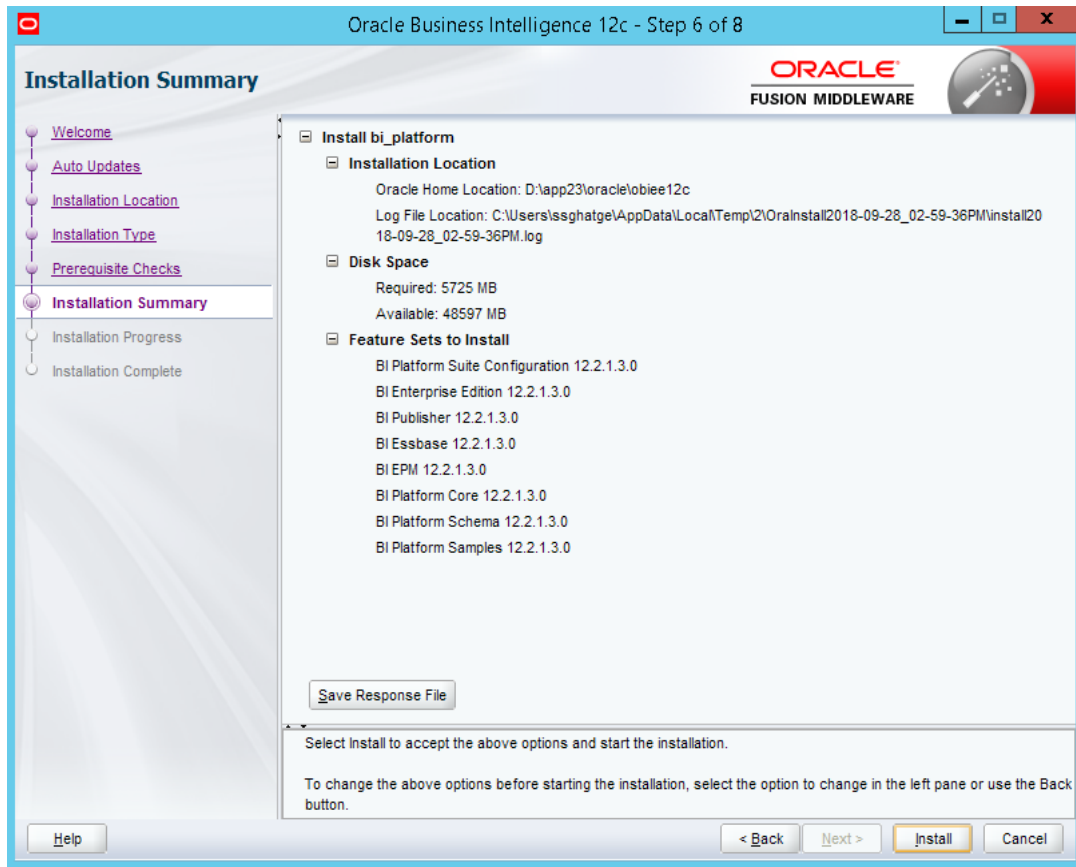
8. Click **Next**.
9. In the Prerequisite Checks page, click **Next** after all system configuration checks are successful.

Figure 3–16 Prerequisite Checks



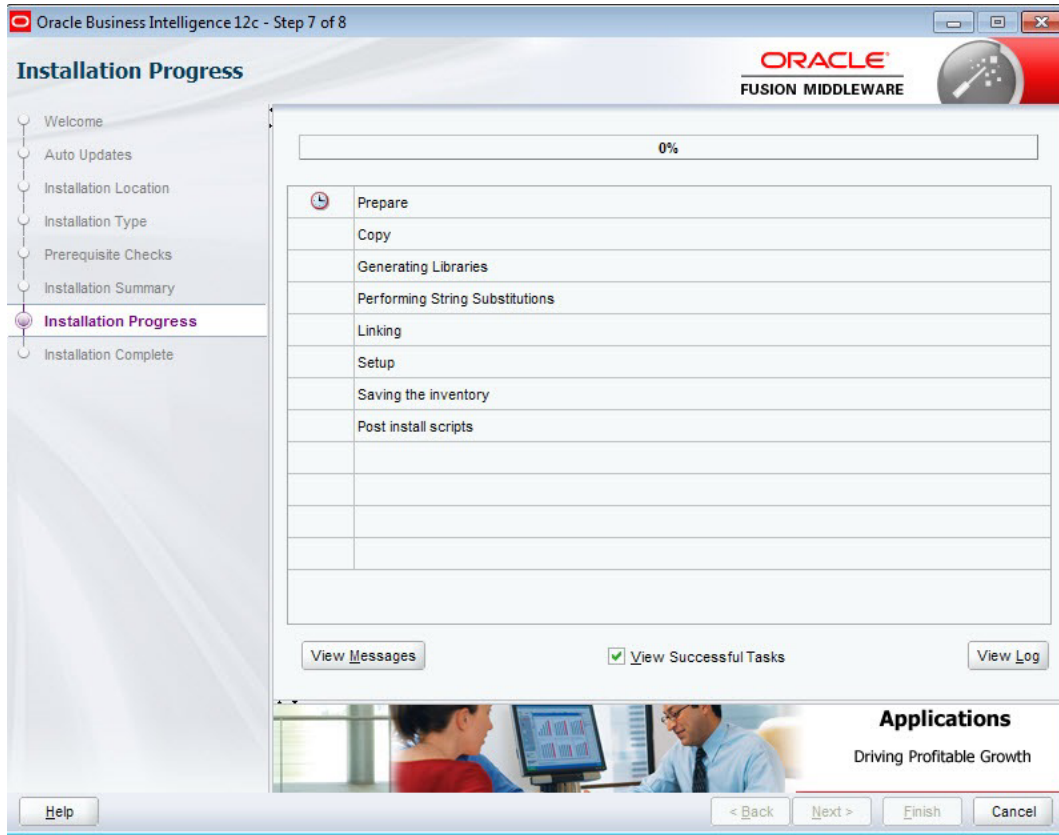
10. In the Installation Summary page, click **Install** to proceed with the installation.

Figure 3–17 Installation Summary - Click Install

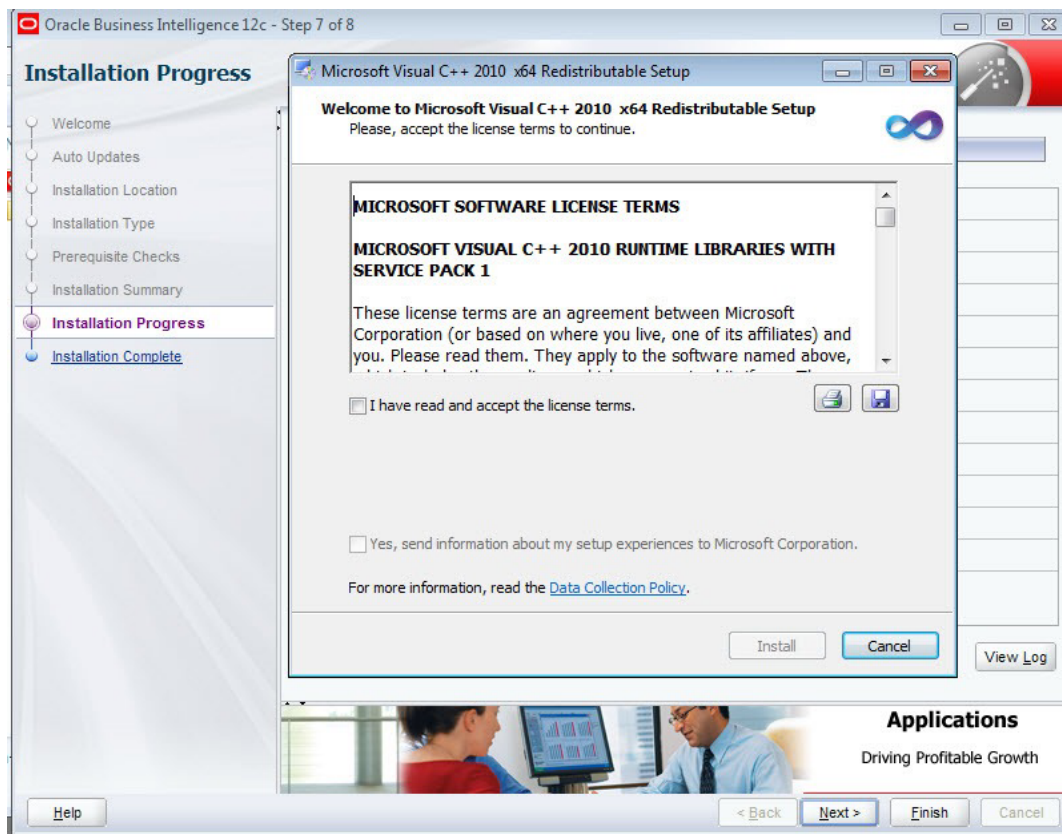


11. After successful installation, in the Installation Progress page, view the progress of the configuration till it shows 100%. Click **Next**.

Figure 3–18 View Installation Progress

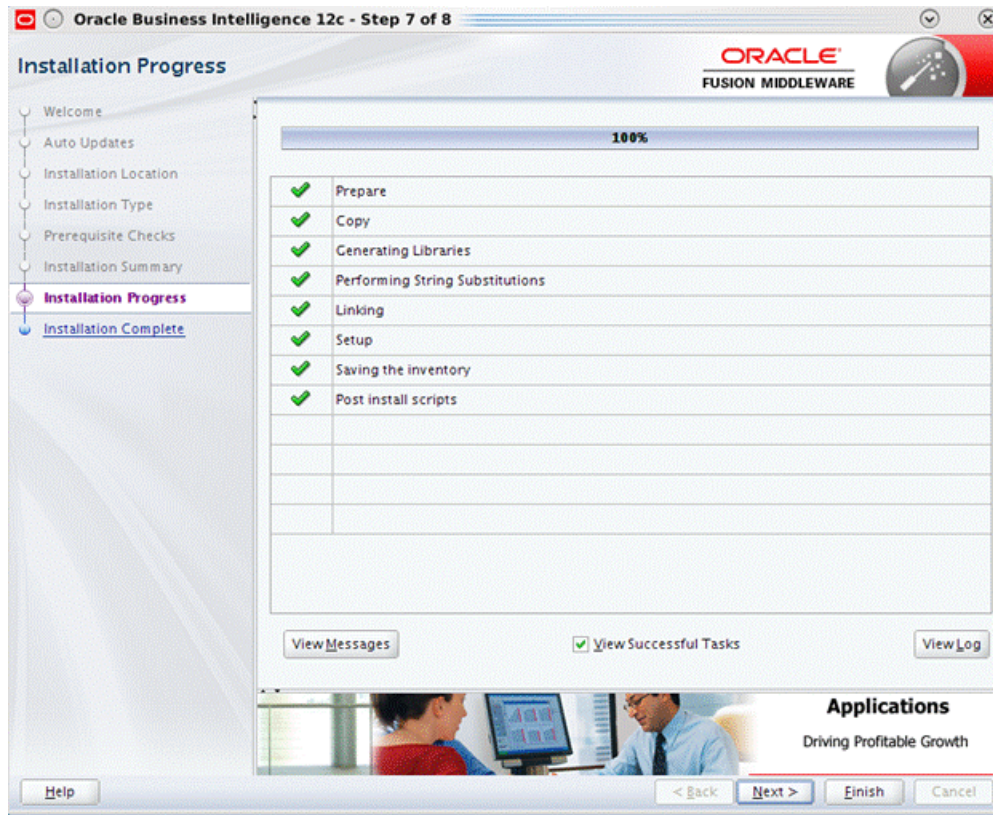


12. In the Installation Progress page, the dialogue box **Microsoft Visual C++2010 x64 Redistributable Setup** appears. Select **I have read and accept the license terms.** check box and click **Install** to complete the installation.

Figure 3–19 Accept OBIEE License Terms

13. In the Installation Progress page, click **Finish** to complete the installation.

Figure 3–20 Installation Complete - Click Finish

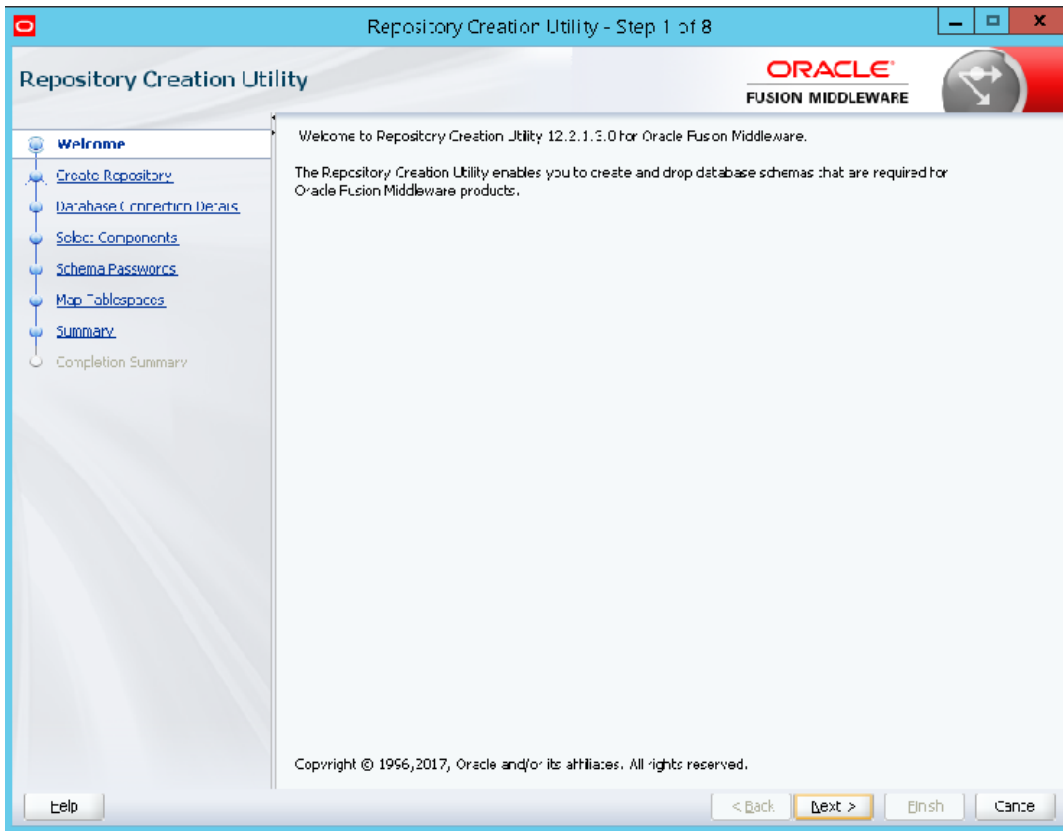


OBIEE 12c is now installed.

3.4 Repository Creation

The Repository Creation Utility (RCU) is no more a separate download as it used to be in the previous releases. It is now part of the software installation.

1. Navigate to `D:\app\oracle\obiee12c\oracle_common\bin` and run the configuration script: `rcu.bat` in Windows.
2. In the Welcome page, click **Next**.

Figure 3–21 Repository Creation Utility - Welcome Page

3. In the Create Repository page, select the **Create Repository** option. Also, if you have DBA privileges then select the **System Load and Product Load** option.

Figure 3–22 Create Repository



4. Click **Next**.
5. In the Database Connection Details page, specify the Oracle database connection details.

Figure 3–23 Specify Database Connection Details

Repository Creation Utility

Database Type: Oracle Database

Host Name: odi12c
For RAC database, specify VIP name or one of the Node name as Host name.
For SCAN enabled RAC database, specify SCAN host as Host name.

Port: 1521

Service Name: orcl

Username: sys
User with DBA or SYSDBA privileges. Example:sys

Password: ●●●●●●

Role: SYSDBA
One or more components may require SYSDBA role for the operation to succeed.

< Back Next > Finish Cancel

6. Click **Next**.
7. Click **OK** after the prerequisite checks are completed.

Figure 3–24 Checking Global Prerequisites

Repository Creation Utility - Checking Prerequisites

Checking Global Prerequisites

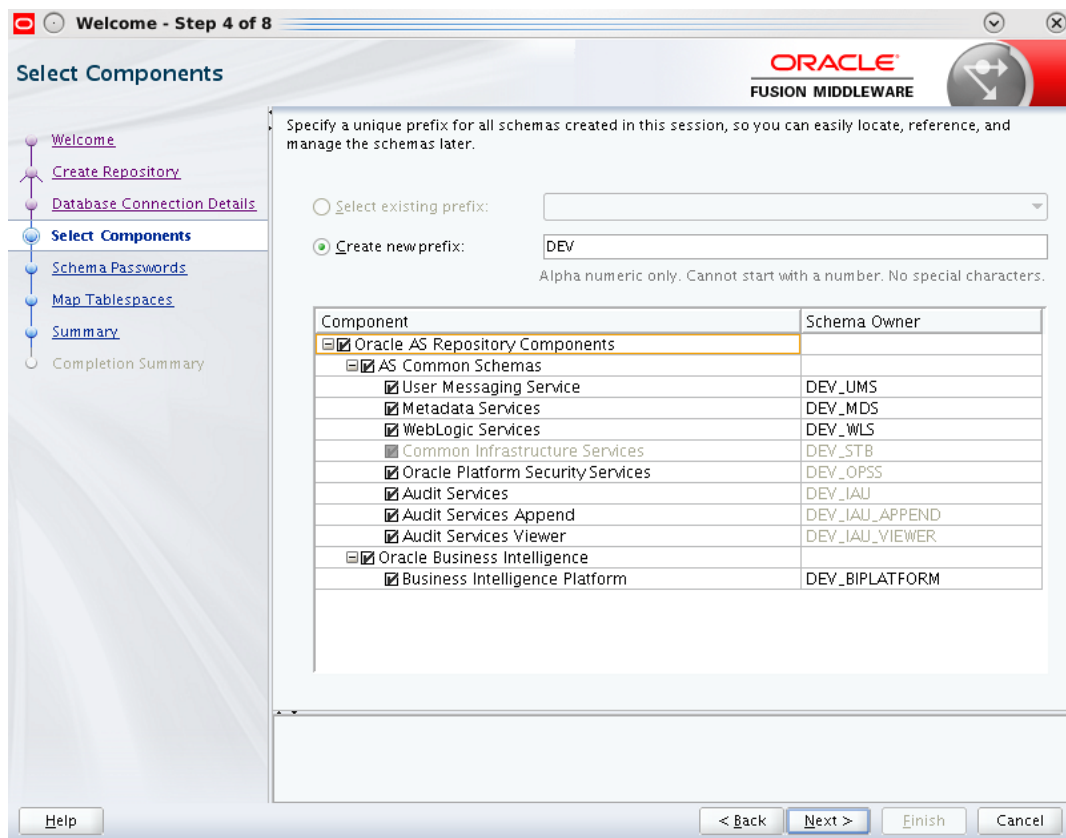
✓	Initializing repository configuration metadata	00:01.007(sec)
✓	Obtain properties of the specified database	00:00.212(ms)
✓	Check requirement for specified database	00:06.051(sec)

Operation completed. Click OK to continue to next page.

OK

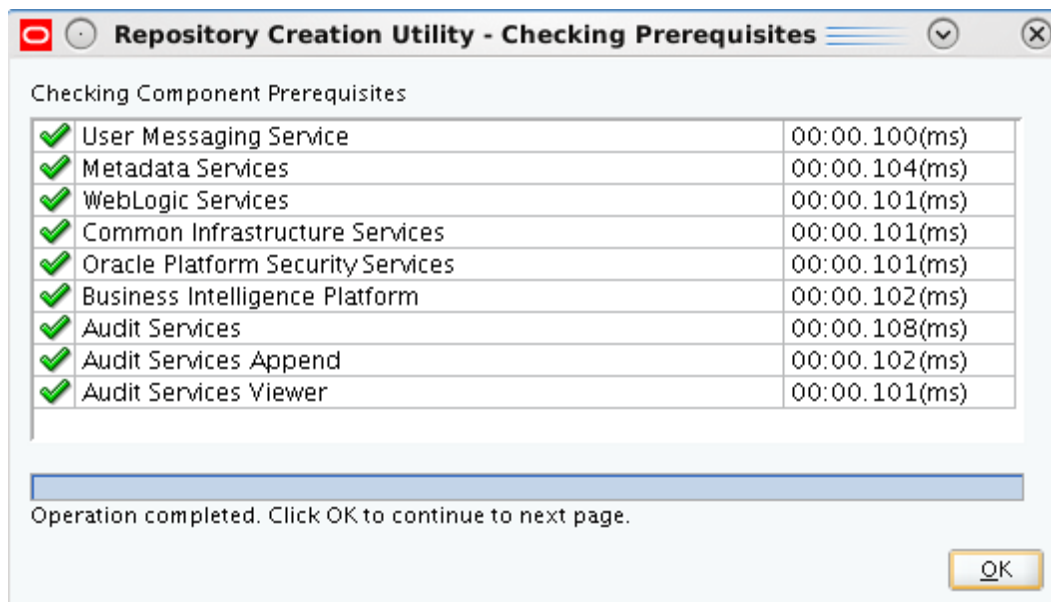
8. Click **Next**.
9. In the Select Components page, select the **Create new prefix** option for the schemas to be created. In this case, the default value DEV is specified.

Figure 3–25 Select Components



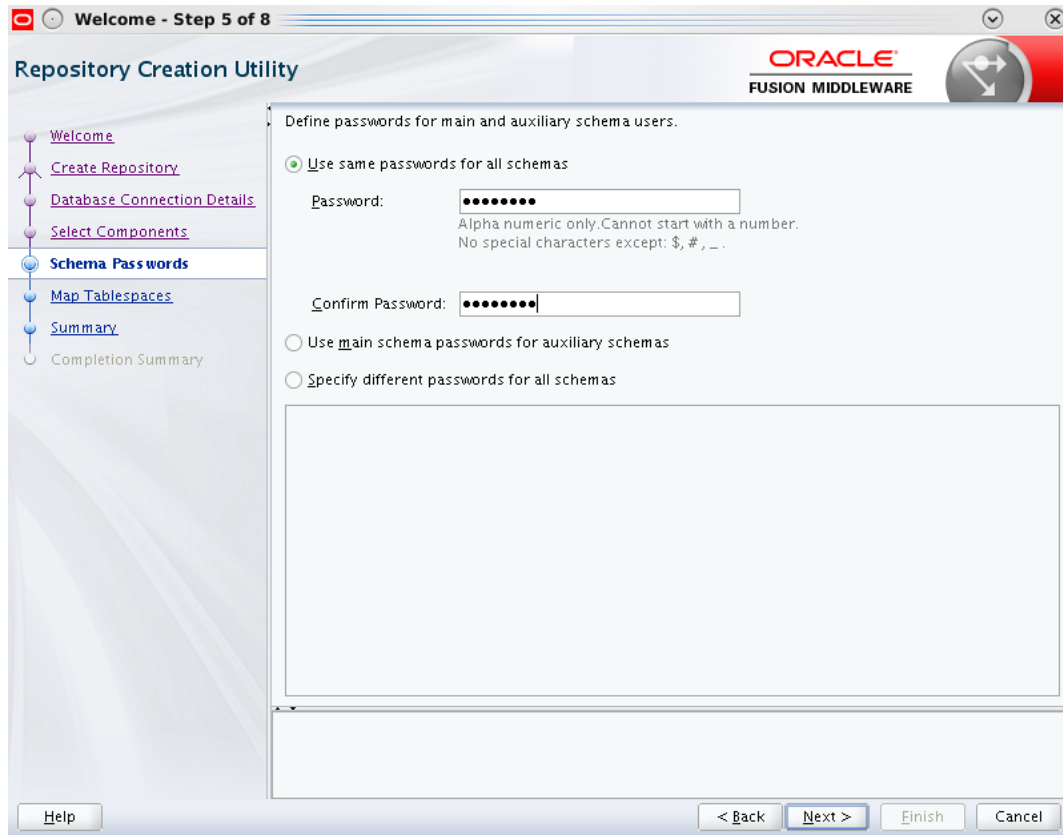
- Click **OK** after the prerequisite checks are completed.

Figure 3–26 Checking Component Prerequisites



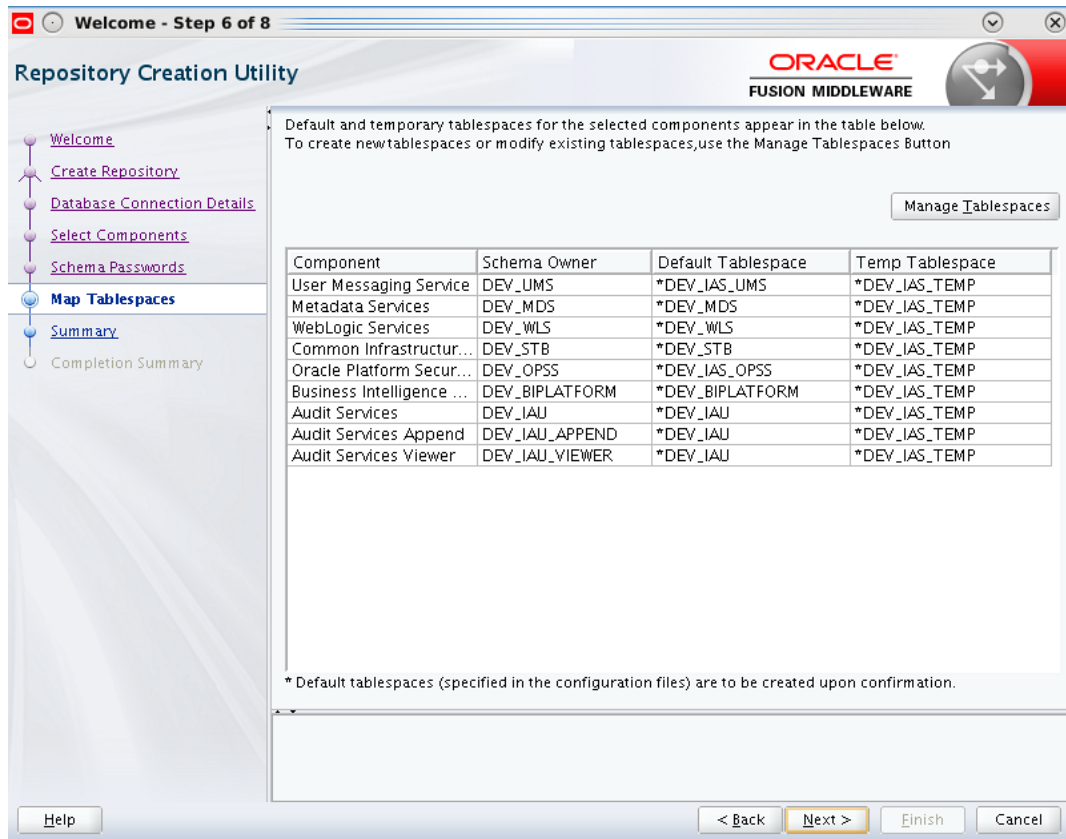
11. In the Schema Passwords page, select **Use same passwords for all schemas** option to provide passwords for the schemas to be created.

Figure 3–27 Specify Schema Passwords



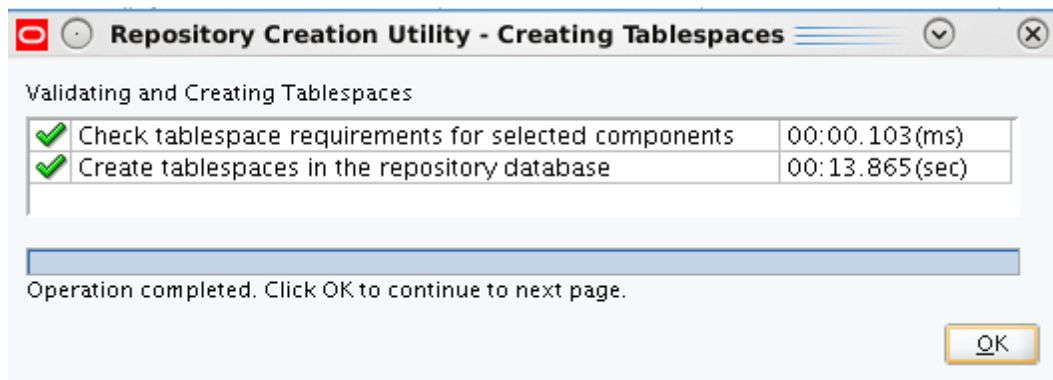
12. Click **Next**.
13. In the Map Tablespaces page, the default and the temporary tablespaces for the selected components appear. Click **Next**.

Figure 3–28 Map Tablespaces



- Click **OK** after the prerequisite checks are completed.

Figure 3–29 Validating and Creating Tablespaces



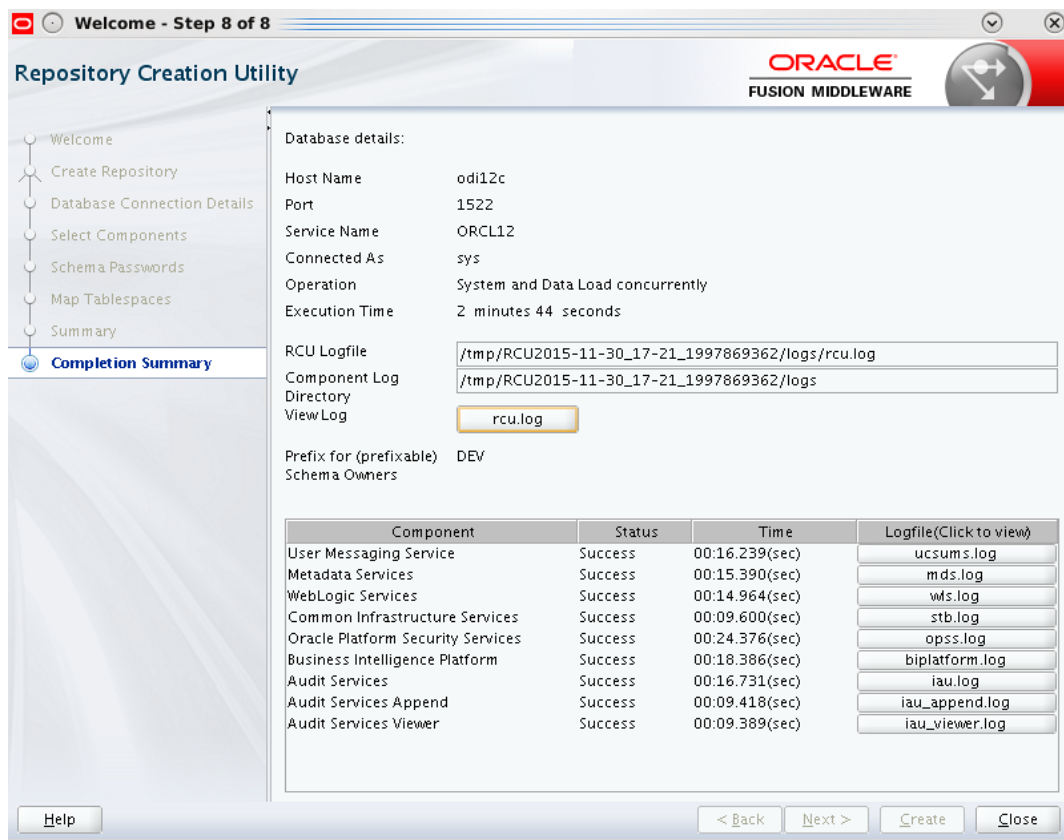
- In the Summary page, click **Create** to confirm the schemas to be created.

Figure 3–30 Repository Creation Utility - Summary



- In the Completion Summary section, click **Close** to exit from RCU. With this step the repositories creation is complete.

Figure 3–31 Repository Creation Utility - Completion Summary

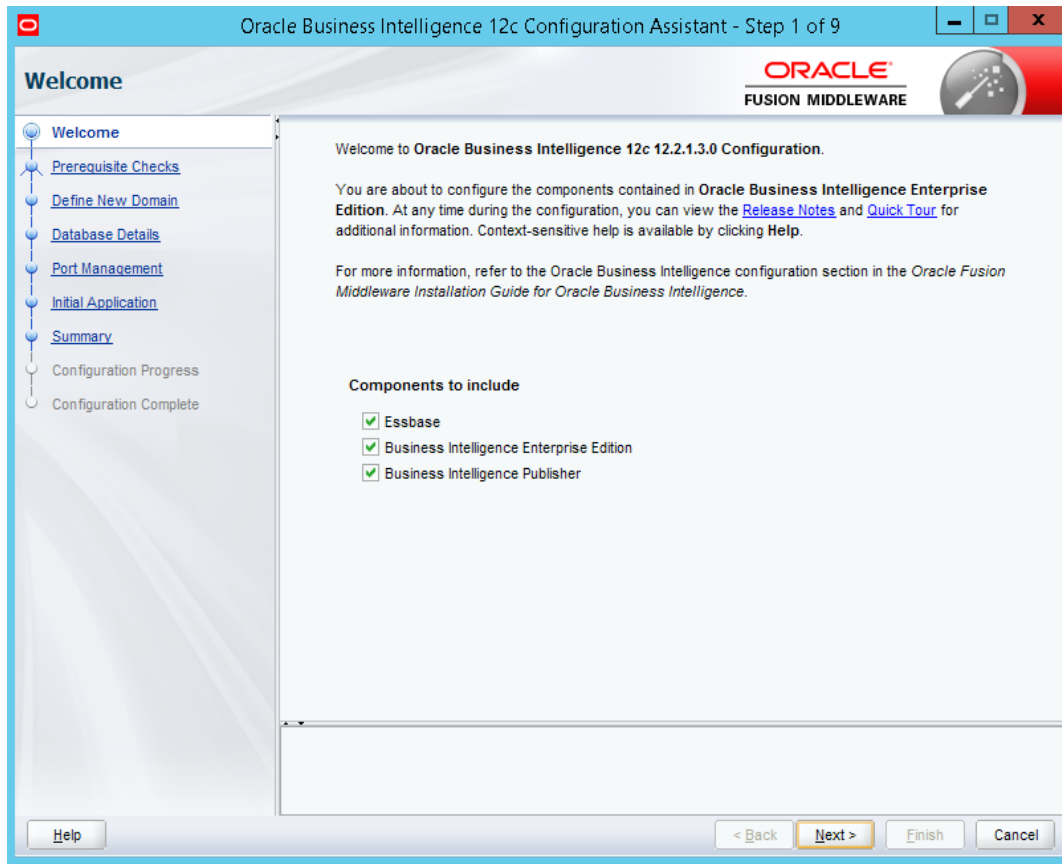


3.5 Configure OBIEE 12c

Following are the steps to configure OBIEE 12c:

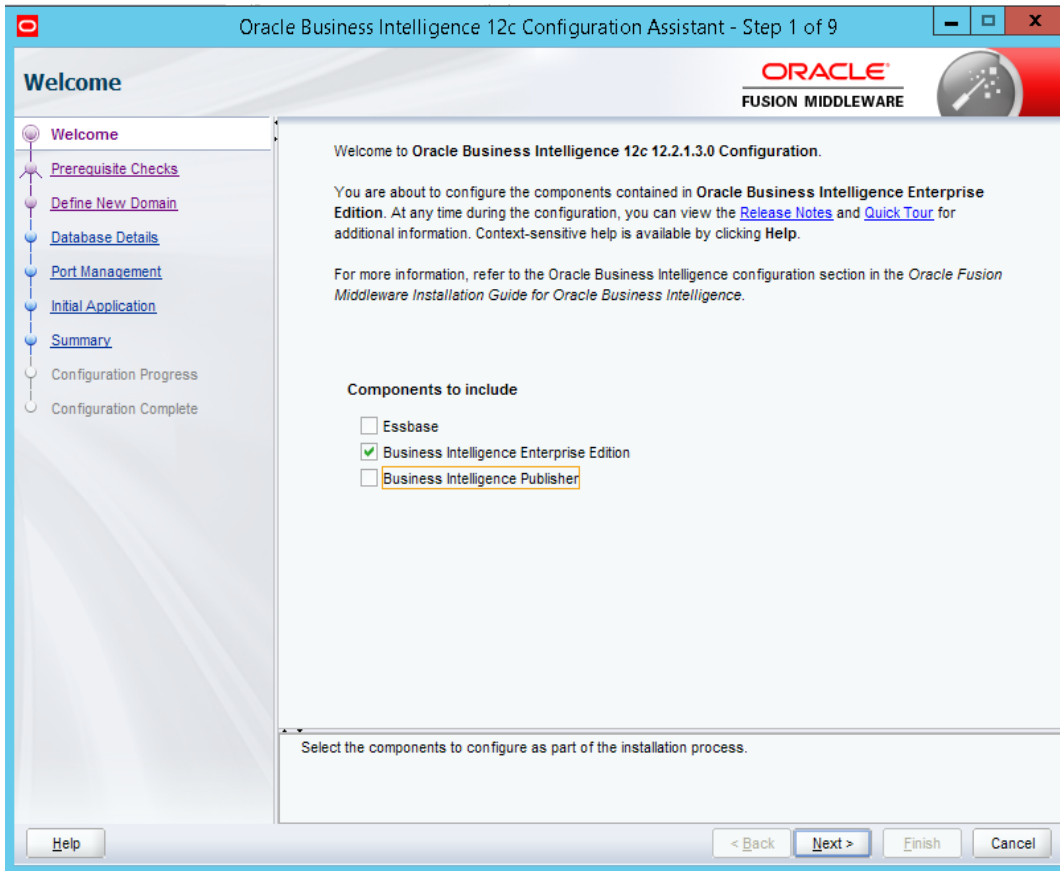
1. Navigate to `D:\app\oracle\obiee12c\bi\bin` and run the configuration script: `config.cmd` in Windows.
2. In the Welcome page, click **Next**.

Figure 3–32 Configure OBIEE - Welcome Page

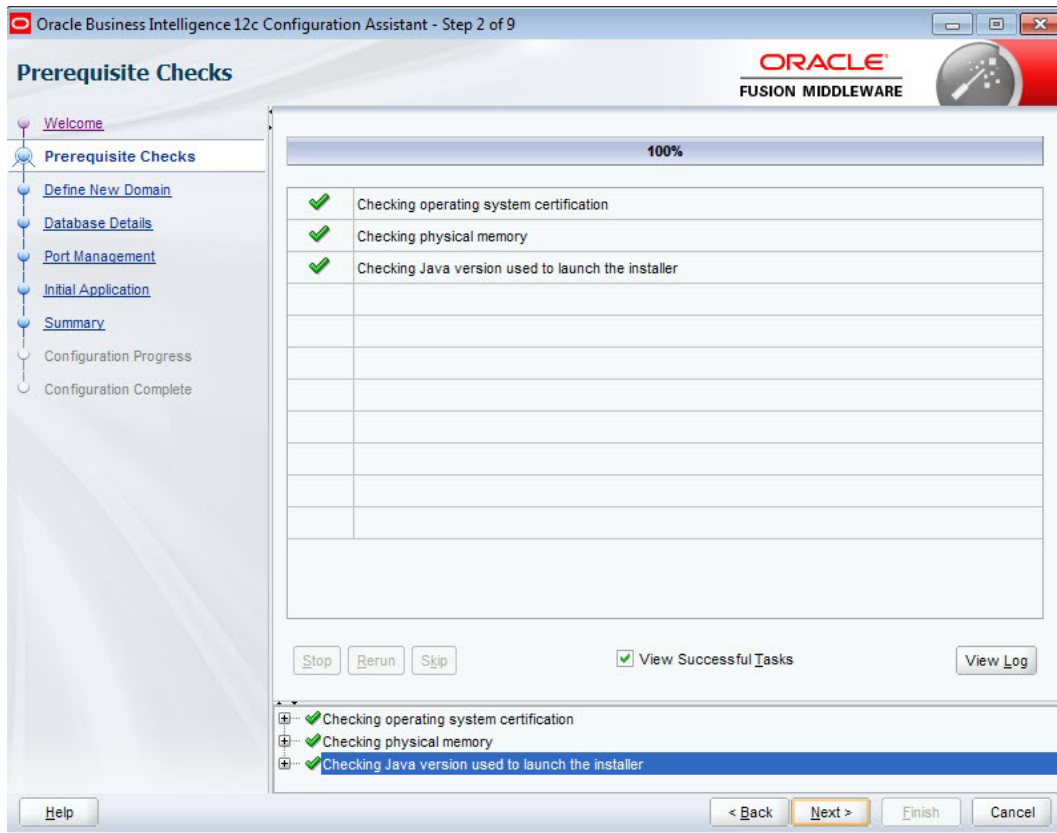


3. To enable the components to install, select the Business Intelligence Enterprise Edition option in the **Components to include** field.

Figure 3–33 Select Components to Include



4. Click **Next**.
5. In the Prerequisite Checks page, click **Next** after all system checks are completed.

Figure 3–34 Prerequisite Checks

6. In the Define New Domain page, specify the details for the BI domain to be created.

Figure 3–35 Define New Domain

Define New Domain

The domain is the basic unit of WebLogic administration. All BI components reside in one domain. The domain needs a place to store files, and initial administrator credentials.

The domain files include configuration files, log files, and data files.

The credentials define the initial administrator account. For security reasons no other default accounts are created. Use this initial account to create individual accounts for your users.

Location of new domain

Domains Directory

Domain Name

Domain Home

Credentials for new domain

Username

Password

Confirm Password

Confirm the password by entering it again.
The password must be a minimum of 8 and not exceed 30 alphanumeric characters. It must begin with an alphabetic character, use only alphanumeric, underscore (_), dollar (\$) or pound (#) characters and include at least 1 digit.

7. Click **Next**.
8. In the Database Schema page, select the **Use existing schemas** option in the Database Details section.

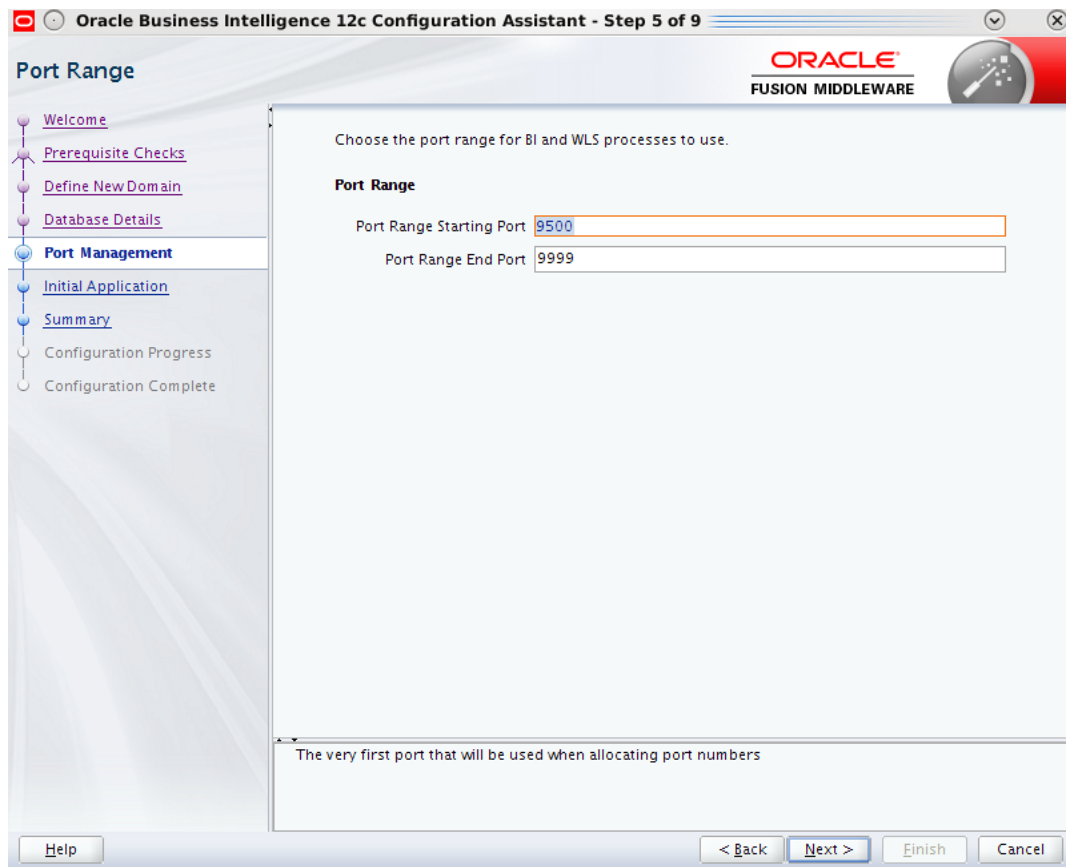
The repositories schemas are created with the RCU, so select Use existing schemas option to continue. Also, there is an option to create the schemas at this step, if the schemas have not been created.

Figure 3–36 Database Schema Details

The screenshot shows the Oracle Business Intelligence 12c Configuration Assistant window at Step 4 of 9, titled "Database Schema". The window has a sidebar on the left with a navigation menu containing: Welcome, Prerequisite Checks, Define New Domain, Database Details (highlighted in red), Port Management, Initial Application, Summary, Configuration Progress, and Configuration Complete. The main content area features the Oracle Fusion Middleware logo at the top right. Below the logo, there is explanatory text: "Database schemas are required for storage of internal housekeeping information. These schemas are distinct from any data sources which you plan to analyse in BI. The simplest option is to create new database schemas here. Alternatively you can use existing schemas you created earlier using the Repository Creation utility (RCU). Using RCU in advance gives you additional options, such as choosing tablespaces. RCU is available in directory /app/oracle/obiee12c/oracle_common/bin." Below this text are two radio button options: "Create new schemas" (unselected) and "Use existing schemas" (selected). Under "Use existing schemas", there are four input fields: "Database type" (a dropdown menu set to "Oracle Database"), "Simple connect string" (text box containing "odl12c:1522:orcl2"), "Prefix" (text box containing "DEV"), and "Password" (password field with masked characters). At the bottom of the main area, there is a text box labeled "Password for STB (Service Table) schema." The window footer contains a "Help" button on the left and "< Back", "Next >", "Finish", and "Cancel" buttons on the right.

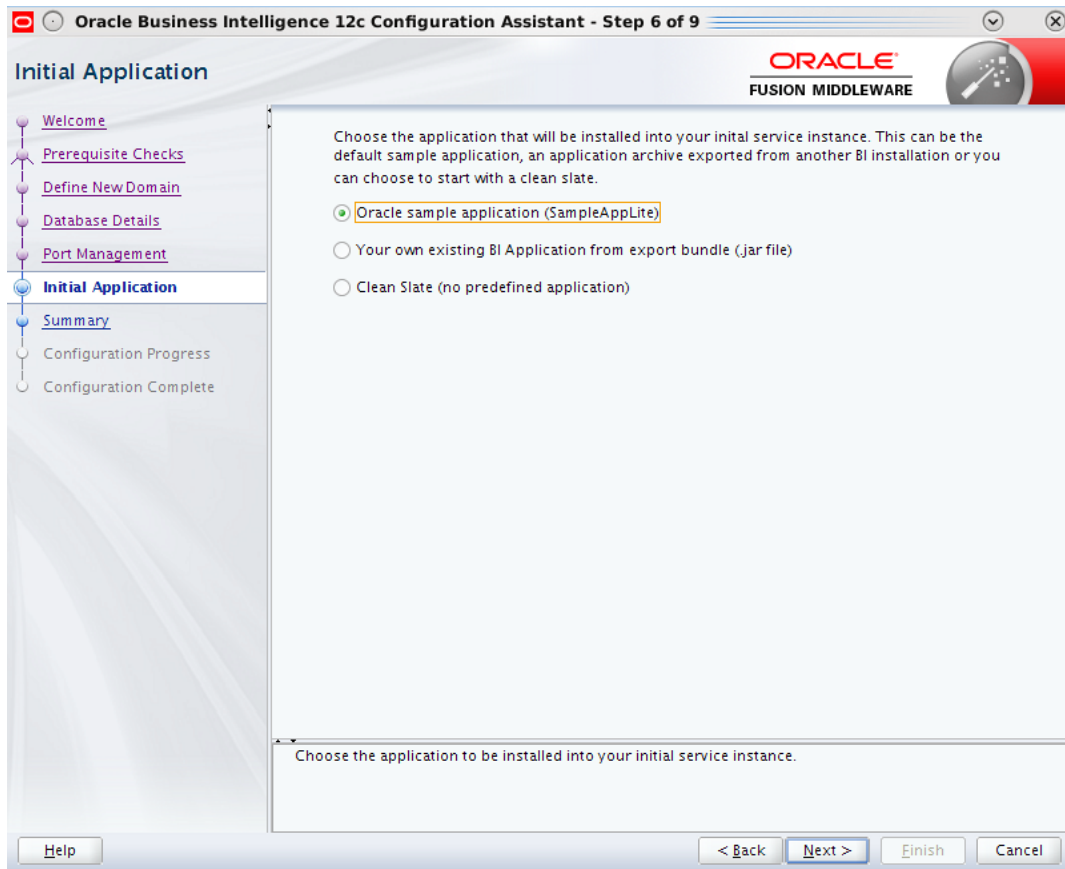
9. Click **Next**.
10. In the Port Range page, enter the port numbers in the **Port Range Starting Port** field. Click **Next**.

Figure 3–37 Specify Port Range



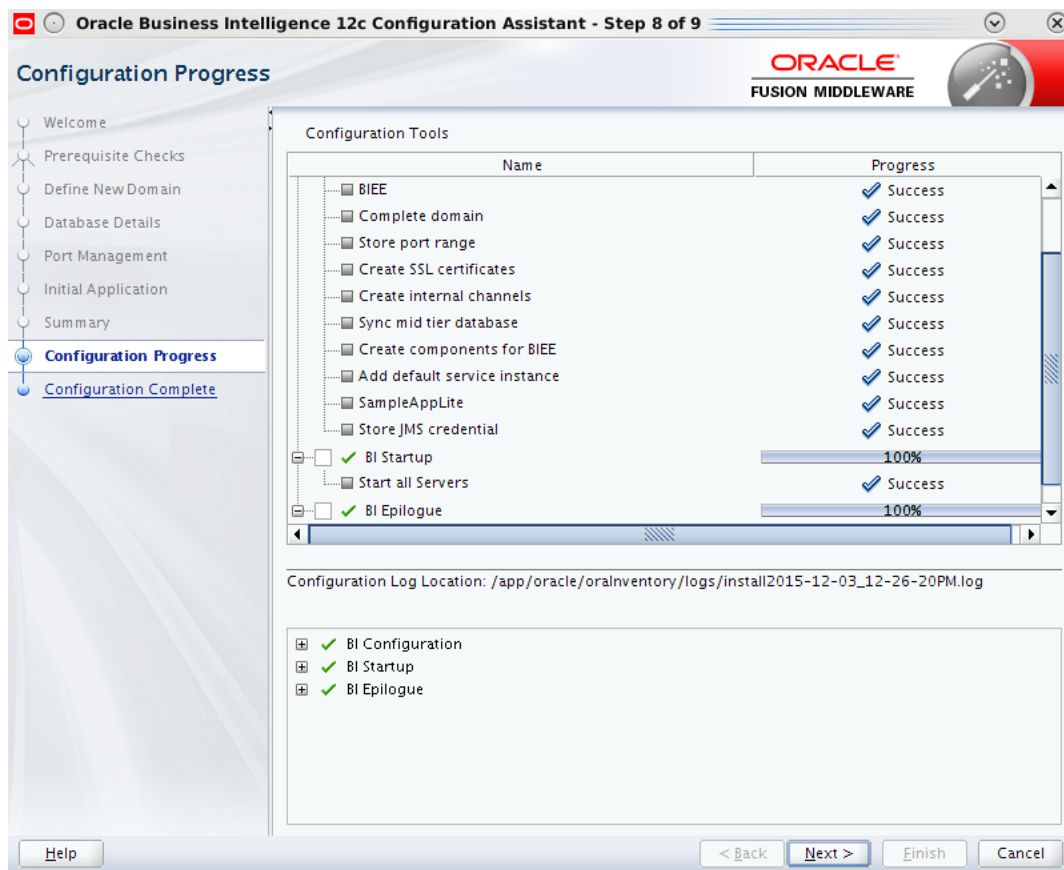
11. In the Initial Application page, select the **Oracle sample application (SampleAppLite)** option. Click **Next**.

Figure 3–38 Initial Application



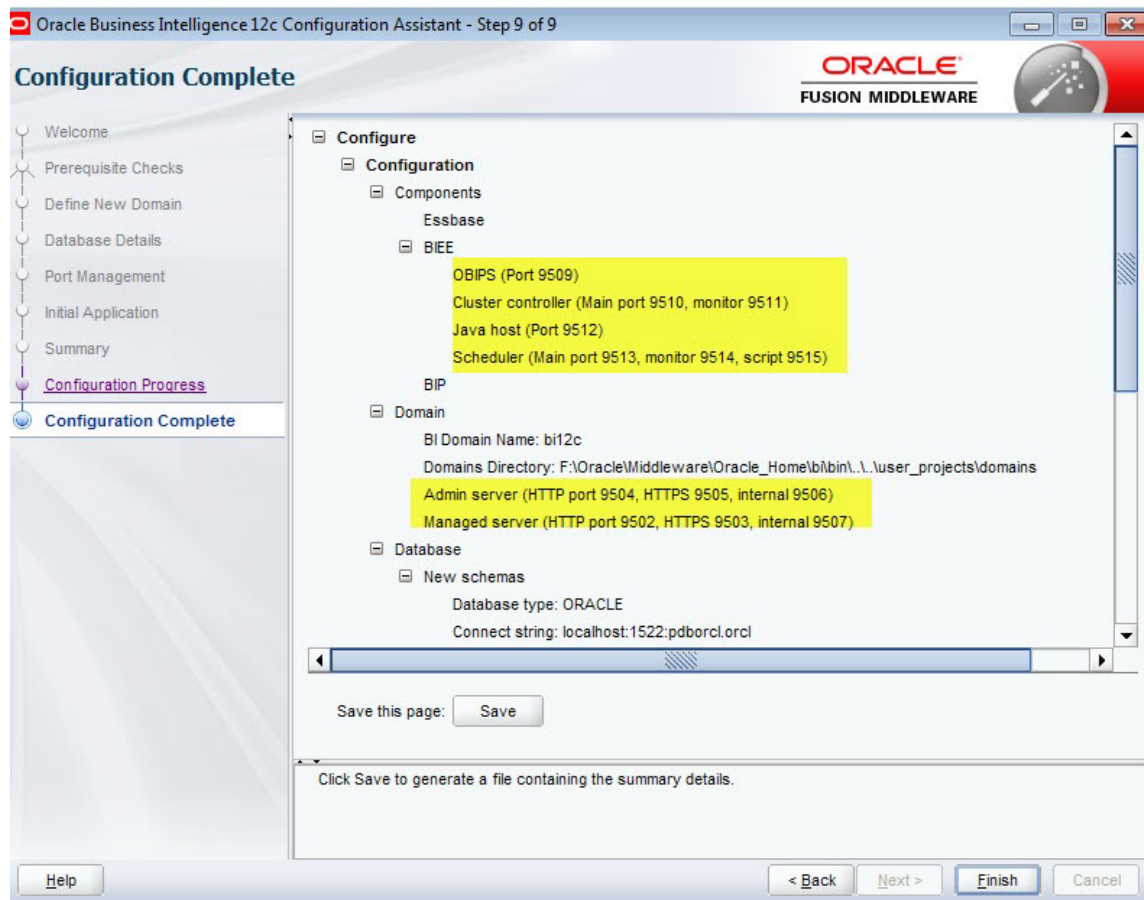
12. Click **Save** to save the configuration install log file.
13. In the Configuration Progress page, click **Next**. The Configuration Complete page appears.

Figure 3–39 OBIEE Configuration Progress



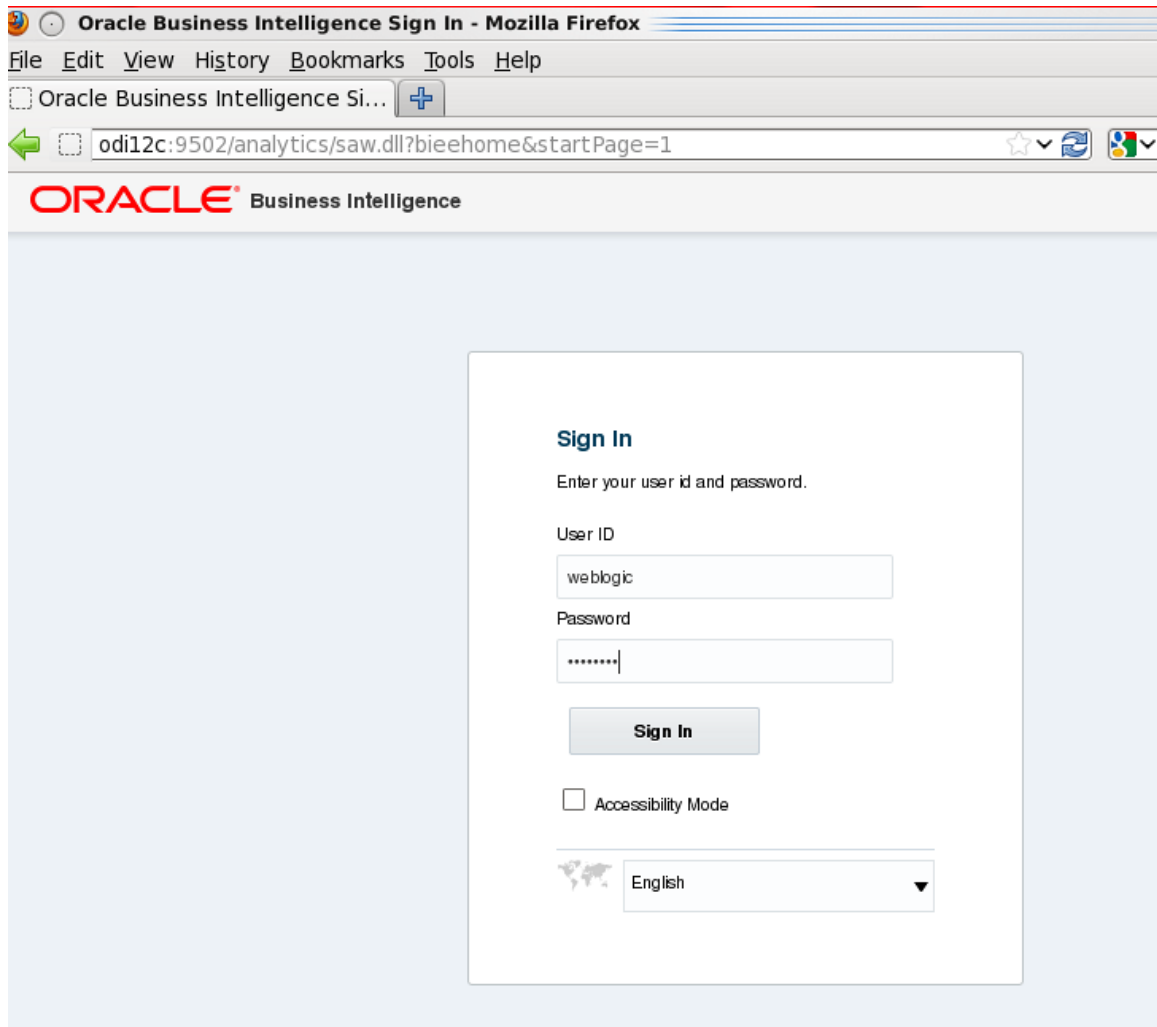
14. In the Configuration Complete page, click **Finish** to complete the configuration.

Figure 3–40 OBIEE Configuration Complete



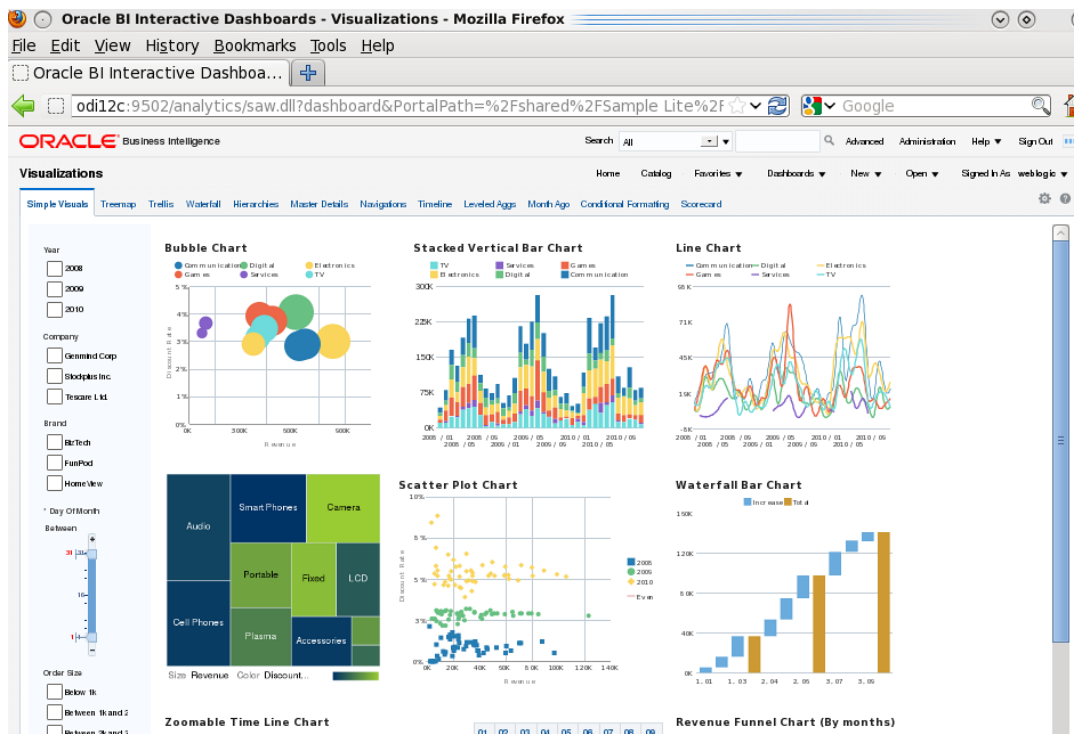
Once you click Finish, the browser window opens up automatically to enable you to log in to OBIEE.

Figure 3–41 OBIEE Login



15. Log on to OBIEE.

Figure 3–42 OBIEE Dashboards Visualizations



With the changes introduced by the new OBIEE 12c version, certain paths have changed. Following are the new path details:

Configure Components: Configure the following components:

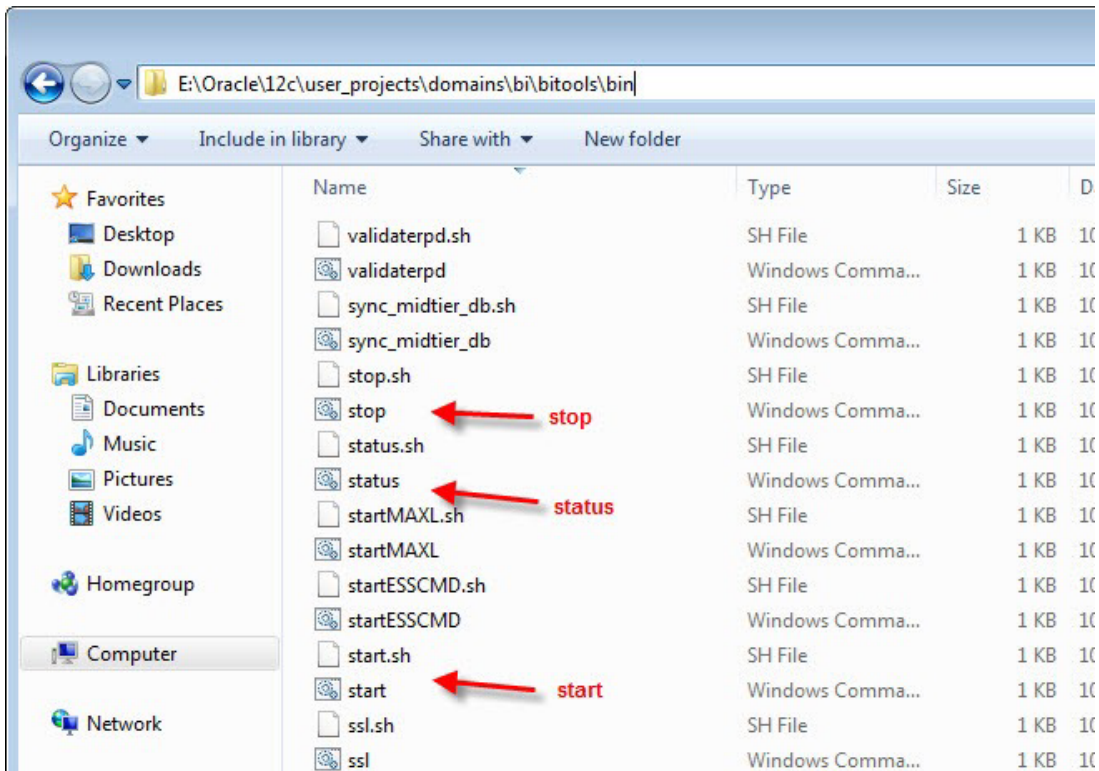
- WebLogic Console: [http:// IP-ADDRESS.in.oracle.com:9500/console](http://IP-ADDRESS.in.oracle.com:9500/console)
- Oracle Enterprise Manager: <http:// IP-ADDRESS.in.oracle.com:9500/em>
- Business Intelligence Enterprise Edition: <http:// IP-ADDRESS.in.oracle.com:9502/analytics>
- Business Intelligence Publisher: <http:// IP-ADDRESS.in.oracle.com:9502/xmlpserver>

OBIEE new path to executables and scripts

Start, Stop, Status scripts

[ORACLE_HOME]/user_projects/domains/bi/bitools/bin - stop.sh | start.cmd | start.cmd |status.cmd

Figure 3–43 Start, Stop, Status scripts



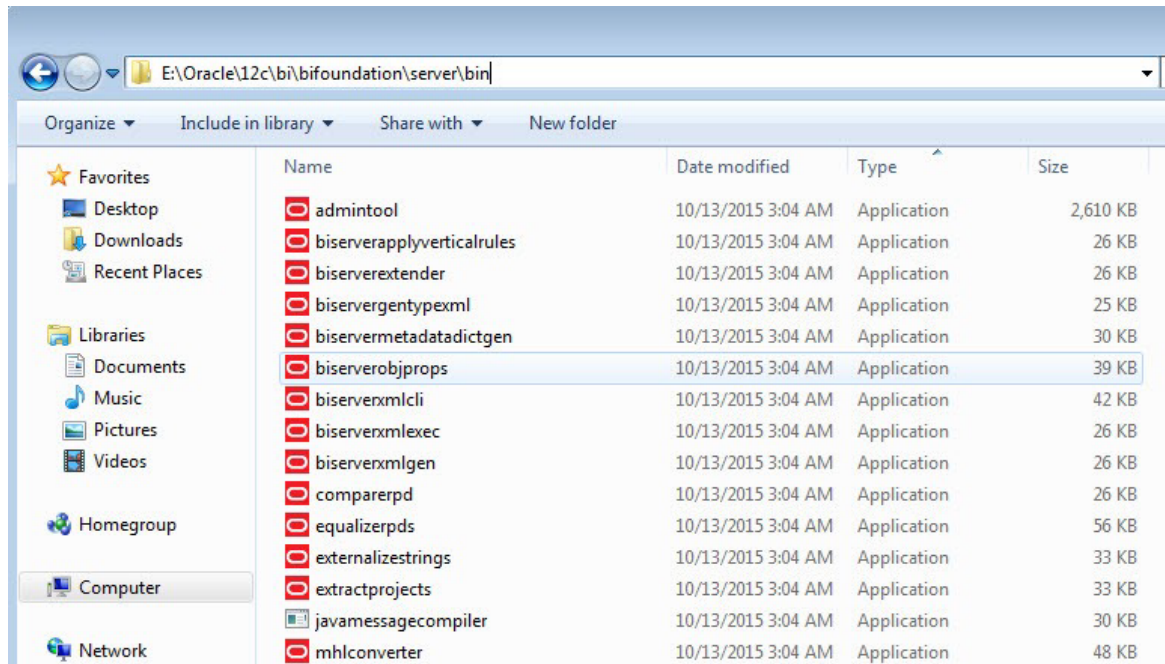
[ORACLE_HOME]/bi/lib/bi-bar.jar (CreateBIArchive java executable)

[ORACLE_HOME]/bi/bifoundation/server/bin/

[ORACLE_HOME]/bi/migration-tool/jlib/bi-migration-tool.jar OBI11g to OBIEE12c migration tool

OBI Server, Scheduler, ClusterController executables

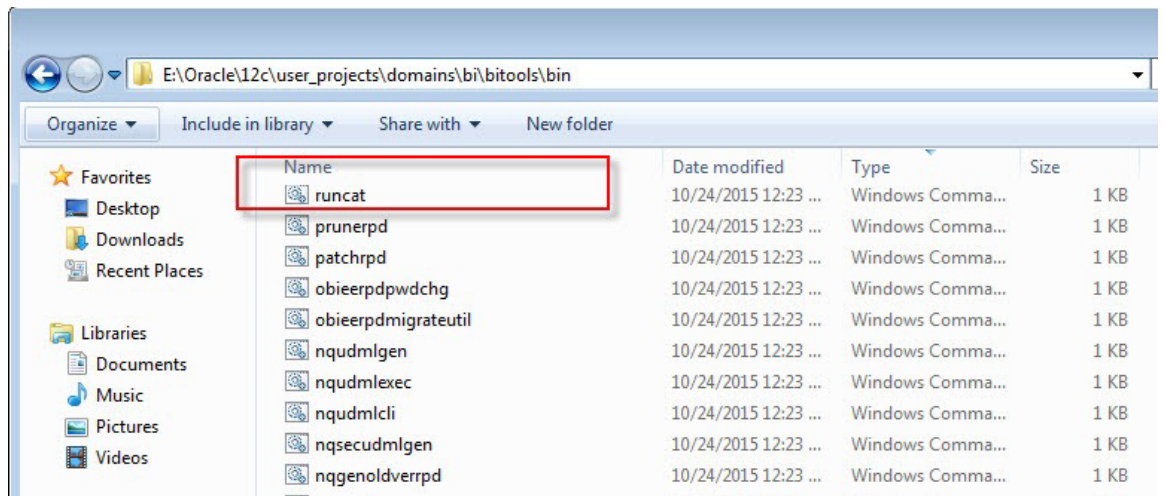
Figure 3–44 OBI Server, Scheduler, ClusterController executables



Catalog manager

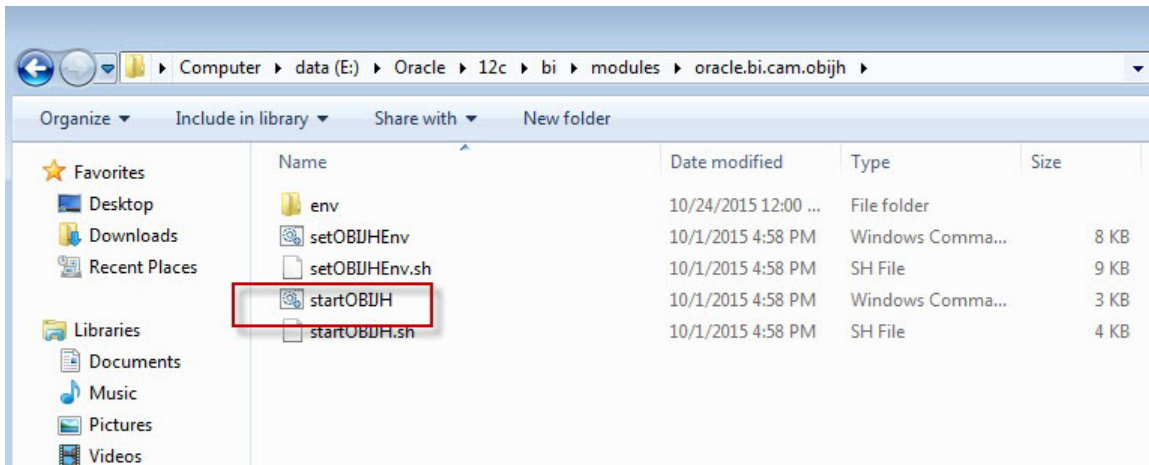
[ORACLE_HOME]/user_projects/domains/bi/bitools/bin/runcat.sh

Figure 3–45 Catalog Manager



Javahost

[ORACLE_HOME]/bi/modules/oracle.bi.cam.obijh/startOBIJH.cmd

Figure 3–46 Javahost**Java applications (xmlpserver.ear, analytics.ear and so on)**

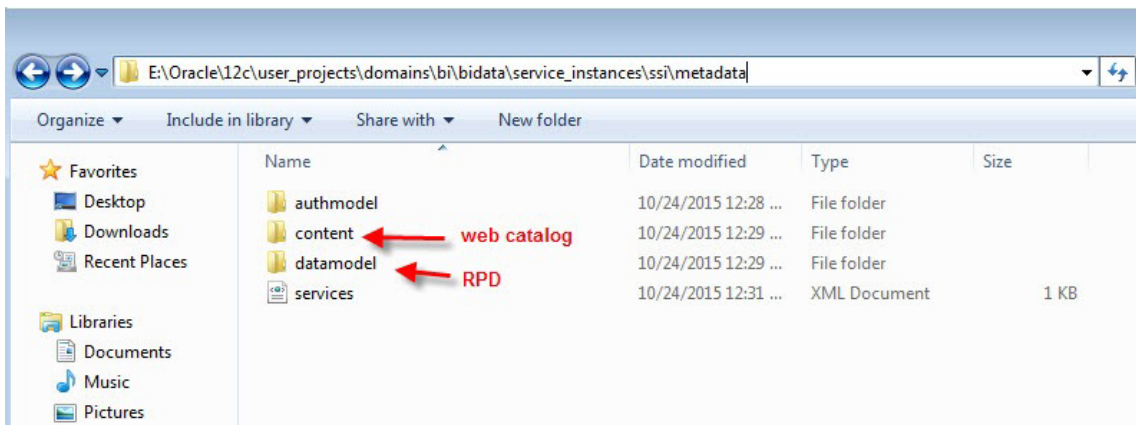
[ORACLE_HOME]/bi/bifoundation/jee/

BI presentation service executable

[ORACLE_HOME]/bi/bifoundation/web/bin/ sawserver

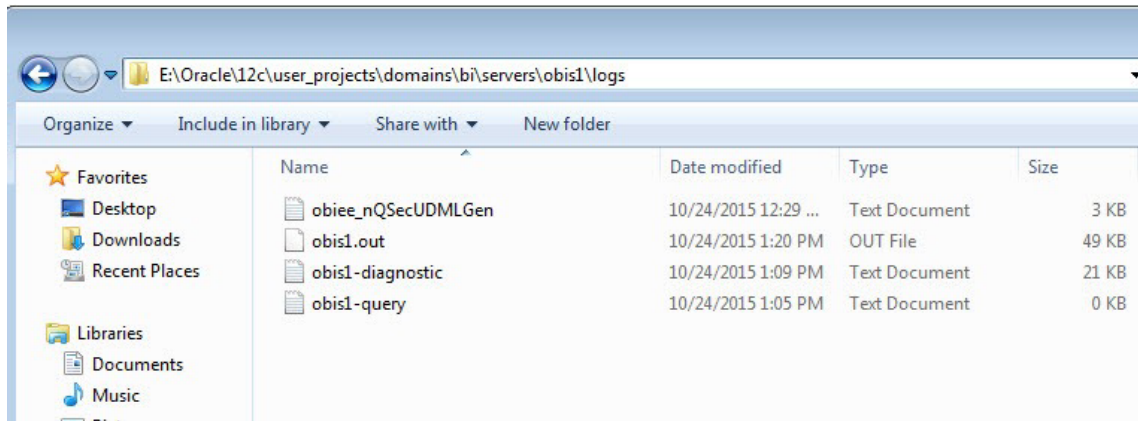
Repository file and web catalog

[ORACLE_HOME]/user_projects/domains/bi/bidata/service_instances/ssi/metadata

Figure 3–47 Repository File and Web Catalog**Log files**

[ORACLE_HOME]/user_projects/domains/bi/servers/obis1/logs/

Figure 3–48 Log Files



Weblogic

- Administration Server: [ORACLE_HOME]/user_projects/domains/bi/servers
- Managed Server: [ORACLE_HOME]/user_projects/domains/bi/servers

System Components

- OBI Server: [ORACLE_HOME]/user_projects/domains/bi/servers/obis1/logs
Presentation Server: [ORACLE_HOME]/user_projects/domains/bi/servers/obips1/logs
- Catalog Manager: /ORACLE_HOME]/user_projects/domains/bi/servers/obips1/logs/catalogmanager
- Scheduler: [ORACLE_HOME]/user_projects/domains/bi/servers/obisch1/logs
- JavaHost: [ORACLE_HOME]/user_projects/domains/bi/servers/objih1/logs
- ClusterController: [ORACLE_HOME]/user_projects/domains/bi/servers/obiccs1/logs

3.6 Copying RPD and Reports

This section explains the steps to copy RPD and reports.

3.6.1 Reports Setup

This section explains the steps for Reports setup.

Step 1

Create a temporary directory (for example, TEMPDIR) on the OBI Server using the following command:

```
mkdir TEMPDIR
```

Step 2

Copy the Oracle Banking Collections and Oracle Banking Recovery Release 2.10.0.0.0 reports installation package, collection_reports.zip, which you have downloaded from the edelivery to TEMPDIR by using WINSXP.

Step 3

Uncompress the Collection_V[Build_Number].zip file using the following command:

```
cd <PATH>/TEMPDIR
```

```
unzip collection_reports.zip
```

Where, <PATH> is the path where the TEMPDIR folder is located.

Step 4

Copy collectionreports folder and collectionreports.atr to the shared location by following commands:

```
cp -r collectionreports ${middleware_home}/instances/${instance_
name}/bifoundation/OracleBIPresentationServicesComponent/coreapplication_
obips1/catalog/SampleAppLite/root/shared/
```

```
cp -r collectionreports.atr ${middleware_home}/instances/${instance_
name}/bifoundation/OracleBIPresentationServicesComponent/coreapplication_
obips1/catalog/SampleAppLite/root/shared/
```

3.6.2 Day 0 Setup

This section explains the steps for Day 0 Setup.

Step 1

Take a backup of existing localedefinitions.xml by following command:

```
mv ${middleware_home}/ Oracle_
BI1/bifoundation/web/display/localedefinitions.xml ${middleware_home}/
Oracle_BI1/bifoundation/web/display/localedefinitions.xml_bk
```

Step 2

Take a backup of existing instanceconfig.xml by following command:

```
mv ${middleware_home}/ instances/${instance_name}/
config/OracleBIPresentationServicesComponent/coreapplication_
obips1/instanceconfig.xml ${middleware_home}/ instances/${instance_name}/
config/OracleBIPresentationServicesComponent/coreapplication_
obips1/instanceconfig.xml_bk
```

Step 3

Copy localedefinitions.xml and instanceconfig.xml to server by following commands:

```
cp Day0/ localedefinitions.xml ${middleware_home}/ Oracle_
BI1/bifoundation/web/display/
```

```
cp Day0/ instanceconfig.xml ${middleware_home}/ instances/${instance_name}/
config/OracleBIPresentationServicesComponent/coreapplication_obips1/
```

3.6.3 RPD Deployment

This section explains the steps for RPD Deployment.

Step 1

Unzip collection_reports.zip folder from local Windows machine.

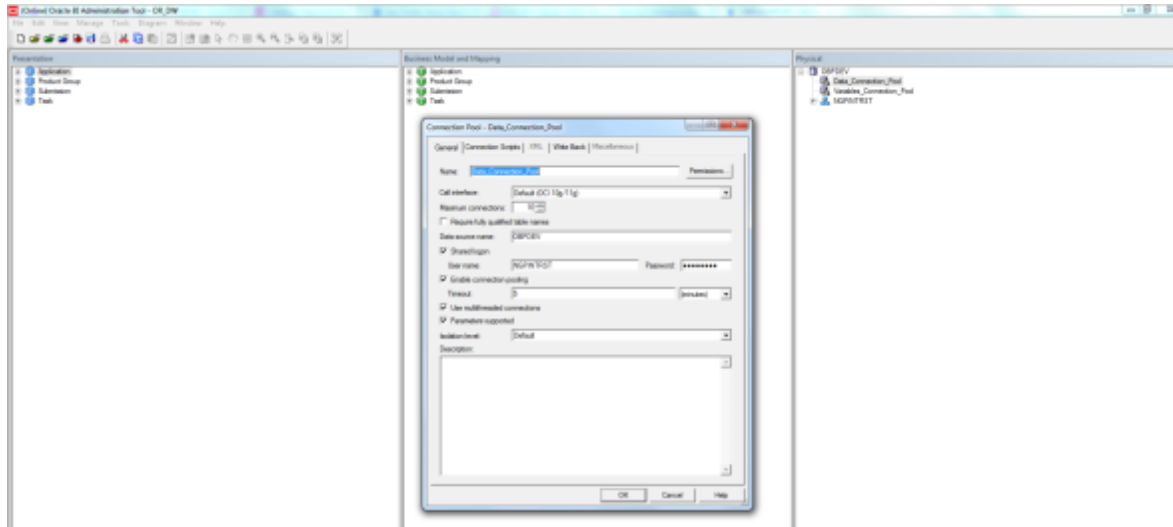
Step 2

Open RPD CollectionMutipleFacts.rpd present inside folder RPD using Oracle BI Admin Tool.

Step 3

Update the DB source name and the user credentials in the Connection Pool of the repository and set it to the Analytics DB.

Figure 3–49 Update Source Name and User Credentials



Step 4

Add the analytics DB TNS entry.

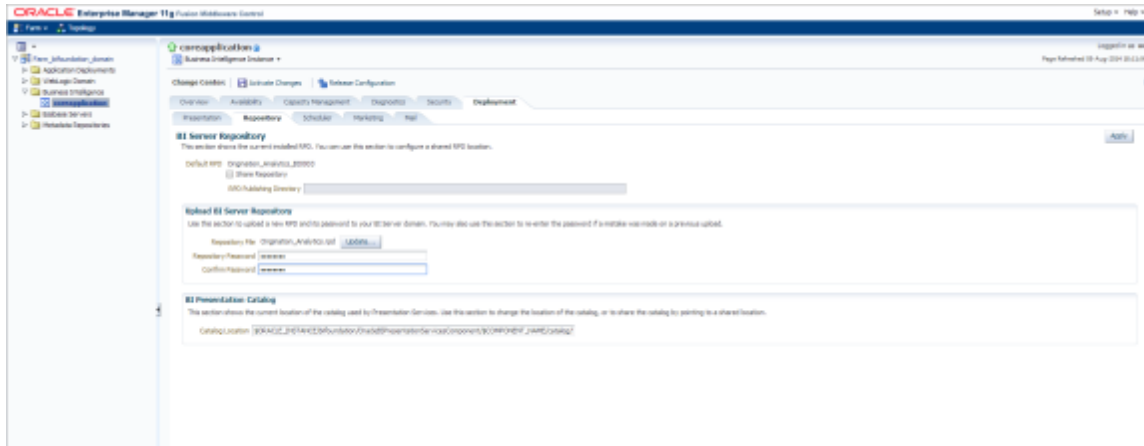
Add the TNS entry for the analytics DB in the tnsnames.ora file at location ORACLE_HOME/network/admin

Step 5

Upload the repository to the OBI server as follows:

1. Log in to the OBI server EM console.
2. Navigate to Business Intelligence -> coreapplication -> Deployment -> Repository tab.
3. Click **Release Configuration**.
4. Click **Upload** and select the repository to be uploaded.
5. Enter the repository password.
6. Click **Apply**.
7. Restart the OBI server components.

Figure 3–50 Upload Repository to OBI Server



Step 6

Open **Oracle Enterprise Manager, Business Intelligence Enterprise Edition** only on Mozilla browser.